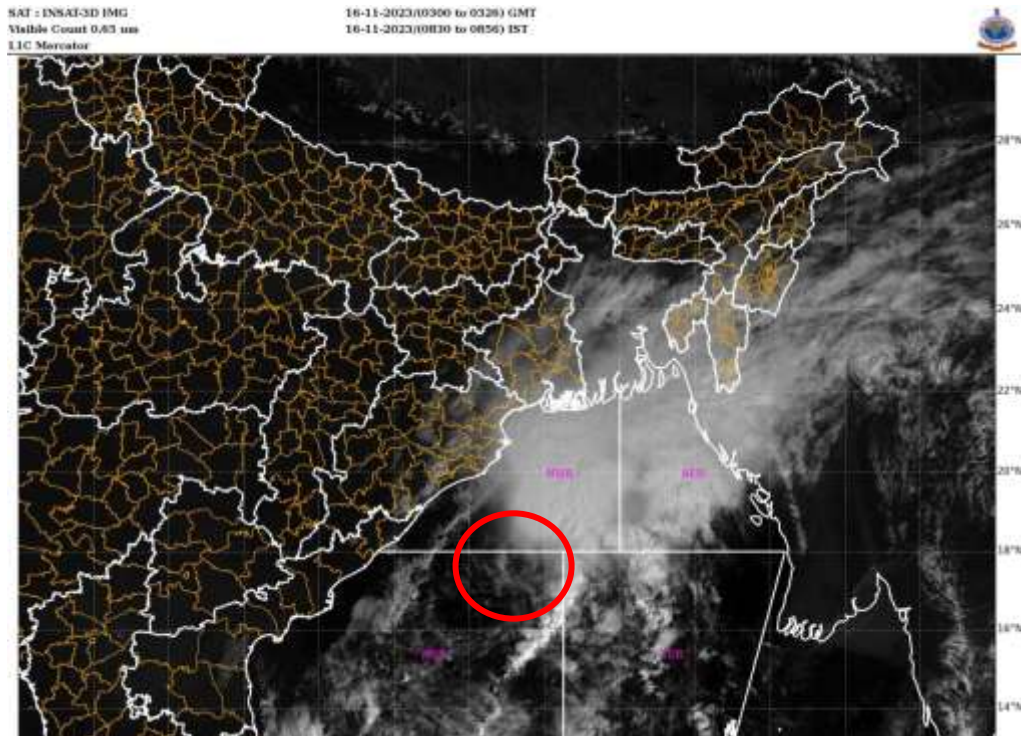


## **SATELLITE FIX BULLETIN**

**16.11.2023 TIME 0300 UTC**



**ZCZC 001**

**TCIN50 DEMS 160300**

**A. VORTEX (BoB)**

**B. 16/0300Z**

**C. 17.5N**

**D. 87.2E**

**E. T2.0/2.0**

**F. INSAT-3D / 3DR**

**F. VIS / IR**

**G. REMARKS: THE SYSTEM HAS MOVED NORTH-NORTH EAST WARD DURING LAST 06 HRS. DISTANCE OF ABOUT 85 KM BETWEEN LLCC AND NEAREST CONVECTIVE EDGE YIELDS DT 2.0. FT BASED ON DT. THE SYSTEM IS SEEN AS A SHEARED PATTERN SYSTEM WITH CONVECTION IN NORTH PART OF THE SYSTEM WITH CTT MINUS 90 DEG CELSIUS. NORTHERN PART OF VORTEX HAS SHOWN LAND INTERACTION WITH NE ORISSA SOUTH GANGETIC WEST BENGAL SOUTH BANGLADESH TRIPURA AND MIZORAM.**

**H. ADDITIONAL POSITION: NIL**

**TOO 16/0940 EF=**

**NNNN**