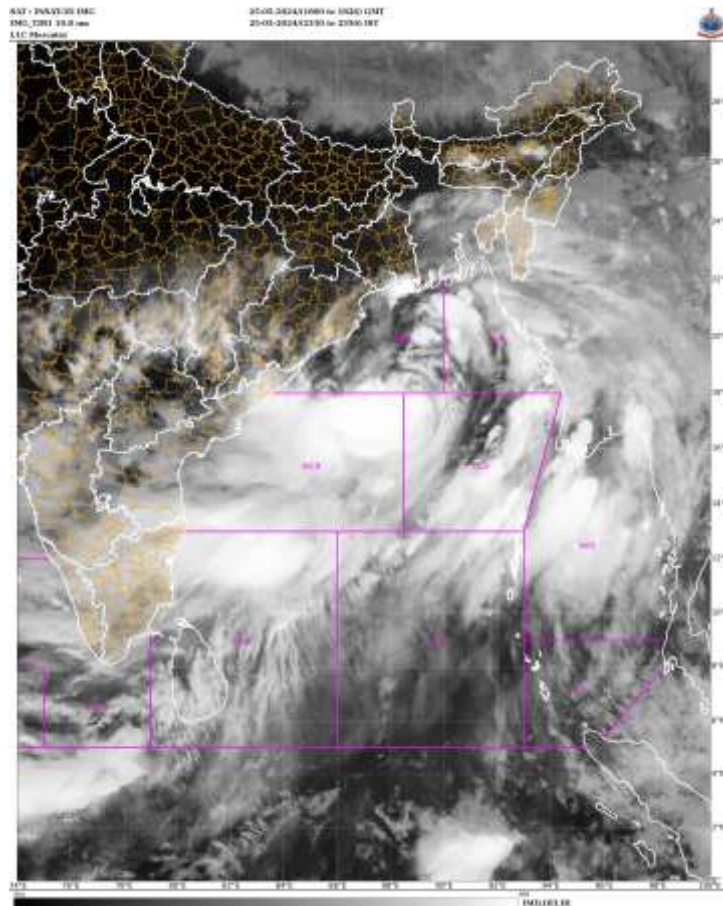


## **SATELLITE FIX BULLETIN**

**25.05.2024 TIME 1800 UTC**



**A. VORTEX (REMAL)**

**B. 25/1800Z**

**C. 19.0N**

**D. 89.4E**

**E. T2.5**

**F. INSAT-3D / 3DR / METOP B**

**F. IR / ASCAT**

**G. REMARKS: THE SYSTEM HAS MOVED NORTHWARDS IN PAST 6 HRS. ASSOCIATED CLOUD BANDS ARE OBSERVED OVER NE AND CENTRAL BAY. INTENSE CONVECTIVE CELLS ARE SEEN DEVELOPING IN THE NORTH-EAST SECTOR. ASCAT METOP B PASS AT 15.39 UTC SHOWS MAXIMUM SUSTAINED WINDS OF 30-35 KTS IN EASTERN SECTOR OF THE SYSTEM CENTRE.**

**H. ADDITIONAL POSITIONS: NIL**

**TOO 26/0045 EF**

**NNNN**