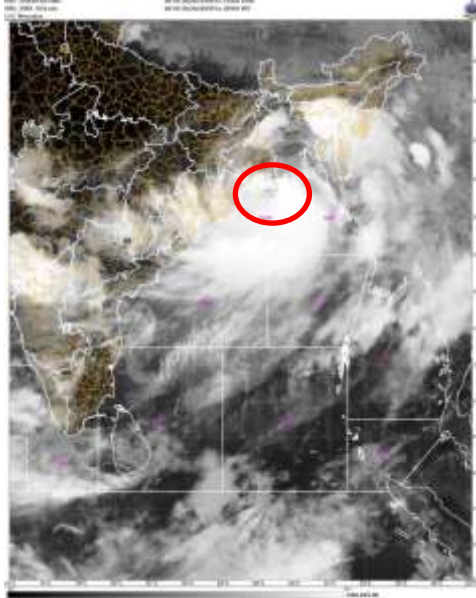


**SATELLITE FIX BULLETIN**

**26.05.2024 TIME 1500 UTC**



**A. VORTEX (REMAL)**

**B. 26/1500Z**

**C. 21.5N**

**D. 89.1E**

**E. T3.5/3.5**

**F. INSAT-3D / 3DR**

**F. IR**

**G. REMARKS: THE SYSTEM MOVED NEARLY NORTHWARDS DURING LAST 6 HRS. SYSTEM IS VERY CLOSE TO THE COAST WITH INTENSE CONVECTIVE CLOUDS SEEN INTERACTING WITH BD AND GWB COAST. ASSOCIATED INTENSE CONVECTION IS SEEN OVER ENTIRE NORTH BAY ODISHA INTERIOR GWB MEGHA S ASSAM MANI MIZO TRP.**

**THE SYSTEM IS WELL ORGANISED WITH GOOD AMOUNT OF EQUATORWARD OUTFLOW AND EMBEDDED INTENSE CONVECTIVE CELLS IN THE SPIRAL BANDING ASSW THE SYSTEM. LARGE CONVECTIVE CLOUD MASS IS OBSERVED IN THE SE SECTOR WITH SATELLITE DERIVED WINDS SHOWING MAXIMUM WINDS IN THE SAME REGION.**

**H. ADDITIONAL POSITONS: NIL**

**TOO 26/2125 EF**

**NNNN**