

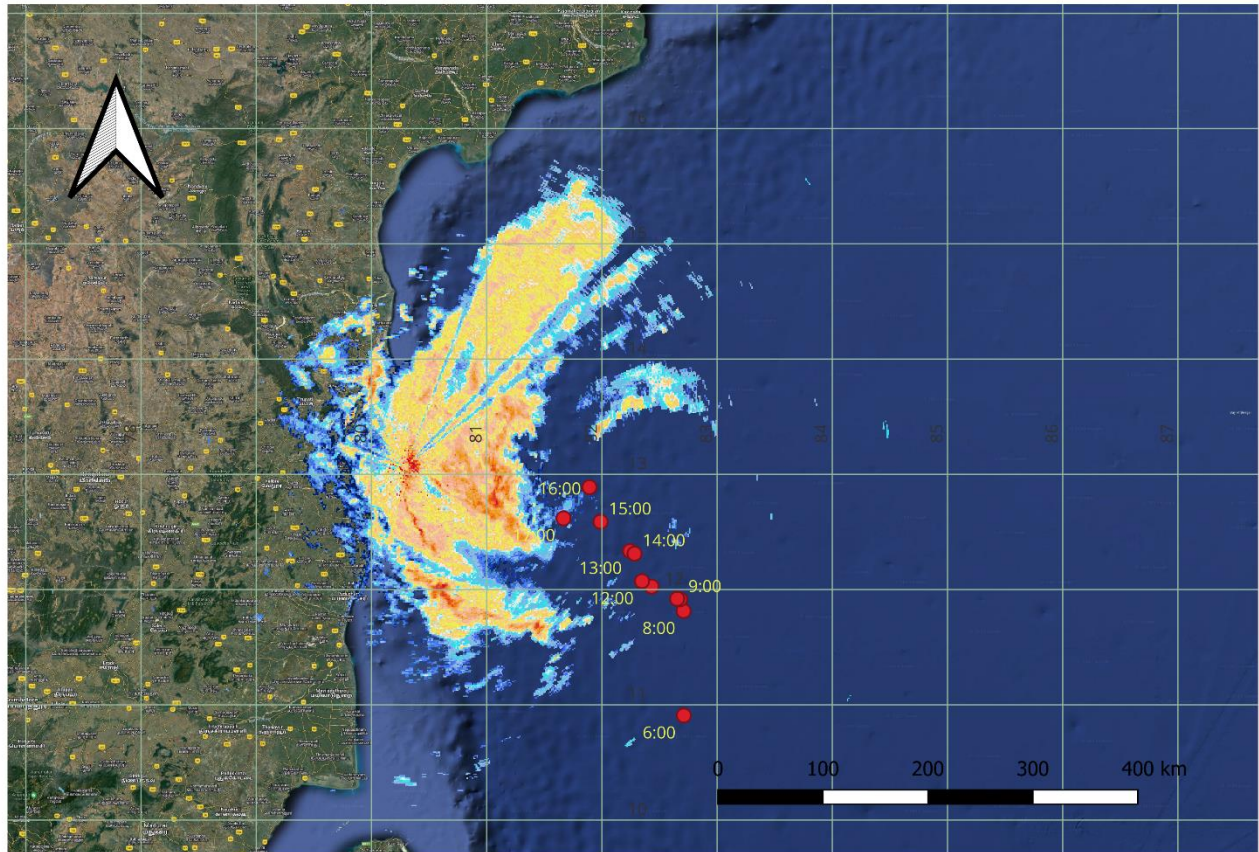
# DWR CHENNAI CYCLONE BULLETIN

BULLETIN NO: **5**

CYCLONE:**Michaung** TIME: 22:30 IST

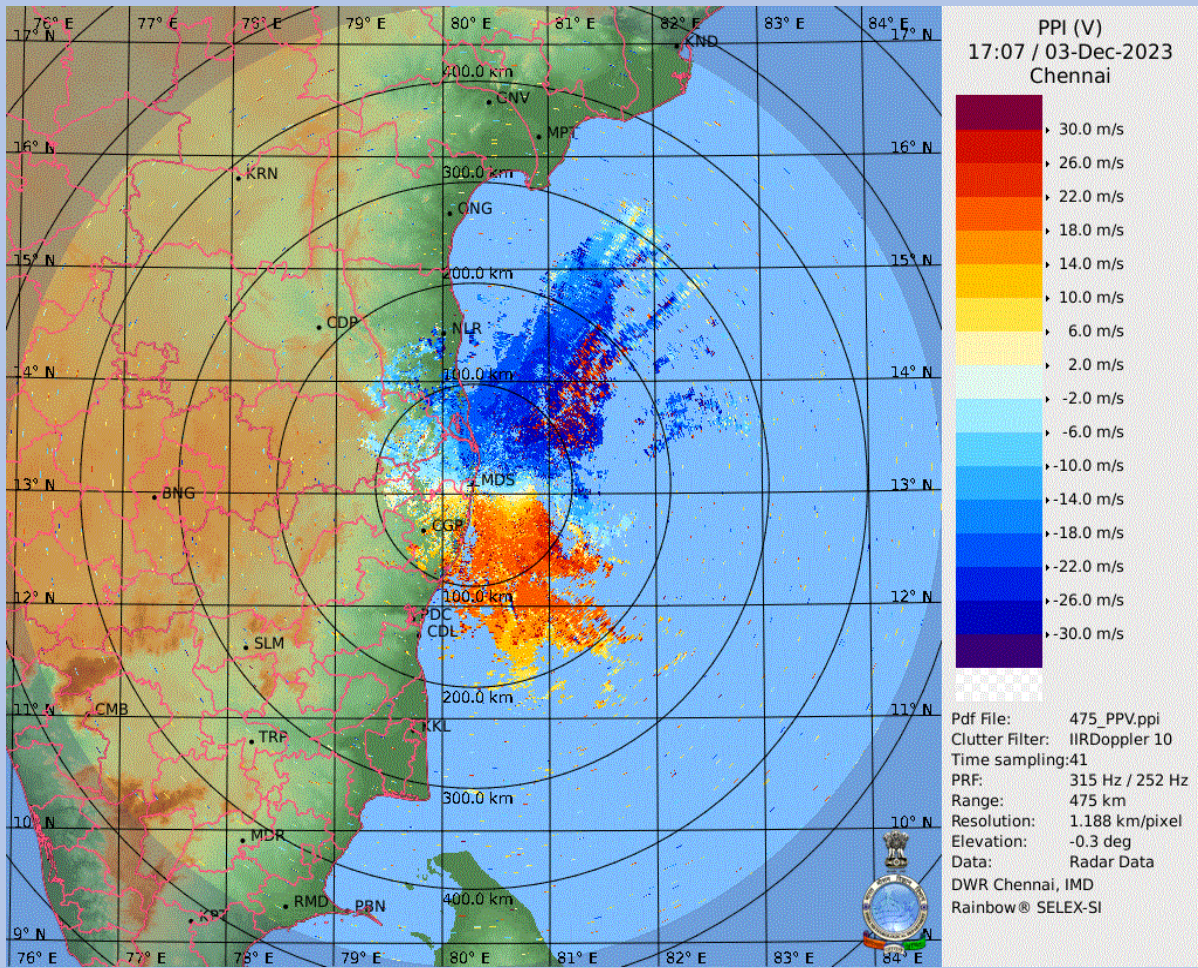
1.	Name of the station	<b>DWR CHENNAI</b>
2.	Date and Time of Observation (UTC)	<b>20231203 / 17:00 UTC</b>
3.	Name of the Cyclone	<b>Michaung</b>
4.	(A) Information about the eye of the Cyclone	
	a) Is the Eye Visible	<b>no</b>
	b) Shape of the Eye	<b>----</b>
	c) Diameter of the Eye(km)	<b>nankm / nankm</b>
	d) Estimation of centre of the cyclone based on Eye/spiral band observation	<b>12.6173<sup>0</sup>N,81.6647<sup>0</sup>E</b>
	(B) Other features of the cyclone	
	e) Echo top (height 20 dBZ level) of rain bearing clouds around the cyclone within 100 Km radius (km)	<b>6.45km</b>
	f) Maximum radar reflectivity (dBZ) in the eye wall/spiral band region,its height (km) and position (azimuth and distance from the radar)	<b>32.50 dBZ 4.00 km (120.90deg, 134.60km)</b>
	g) Maximum reflectivity at any other area (spiral/streamers etc)	<b>37.00dBZ 2.00km (164.20deg, 130.60km)</b>
	h) Maximum radial velocity in eye wall/spiral band region (mps), its height (km) and its position (azimuth and distance from the Radar)	<b>21.40m/s 0.33km (124.80deg, 126.50km)</b>
	i) Maximum velocity in any other area (spiral /streamers / rain shields etc)	<b>32.13m/s 0.17km (56.70deg, 107.80km)</b>
5.	Tendency of the Cyclone	
	1) Intensity(Increasing/Decreasing)	<b>Increasing</b>
	2) Duration for which the information on movement pertains to	<b>6 hr</b>
	3) Direction of Movement	<b>SSW</b>
	4) Estimated speed of Movement	<b>17.67 kmph</b>
6.	Any other Significant Feature	<b>nan</b>
7.	Confidence	<b>GOOD</b>

**OFFICER INCHARGE  
DWR Chennai**

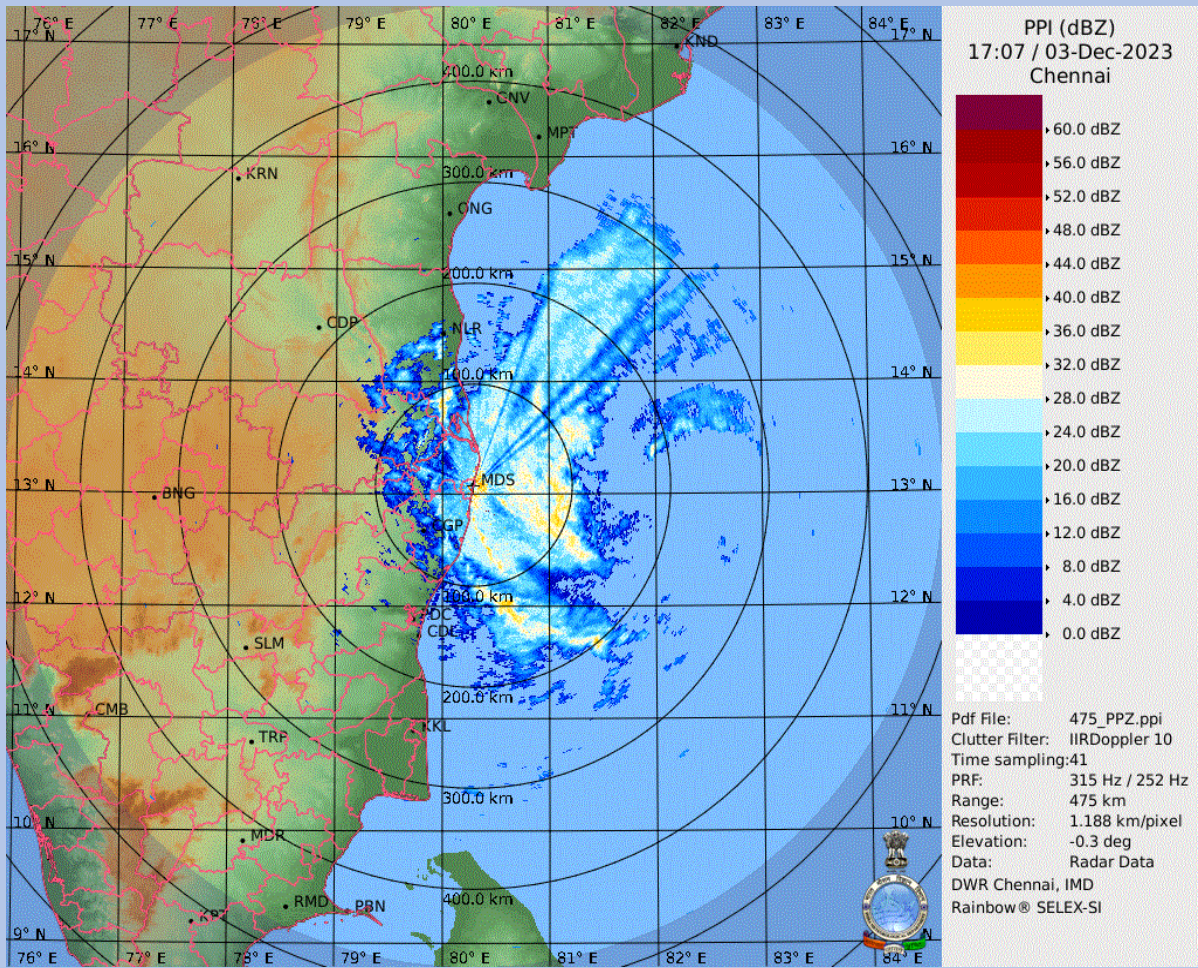


**TRACK & PRESENT POSITION OF THE SYSTEM**

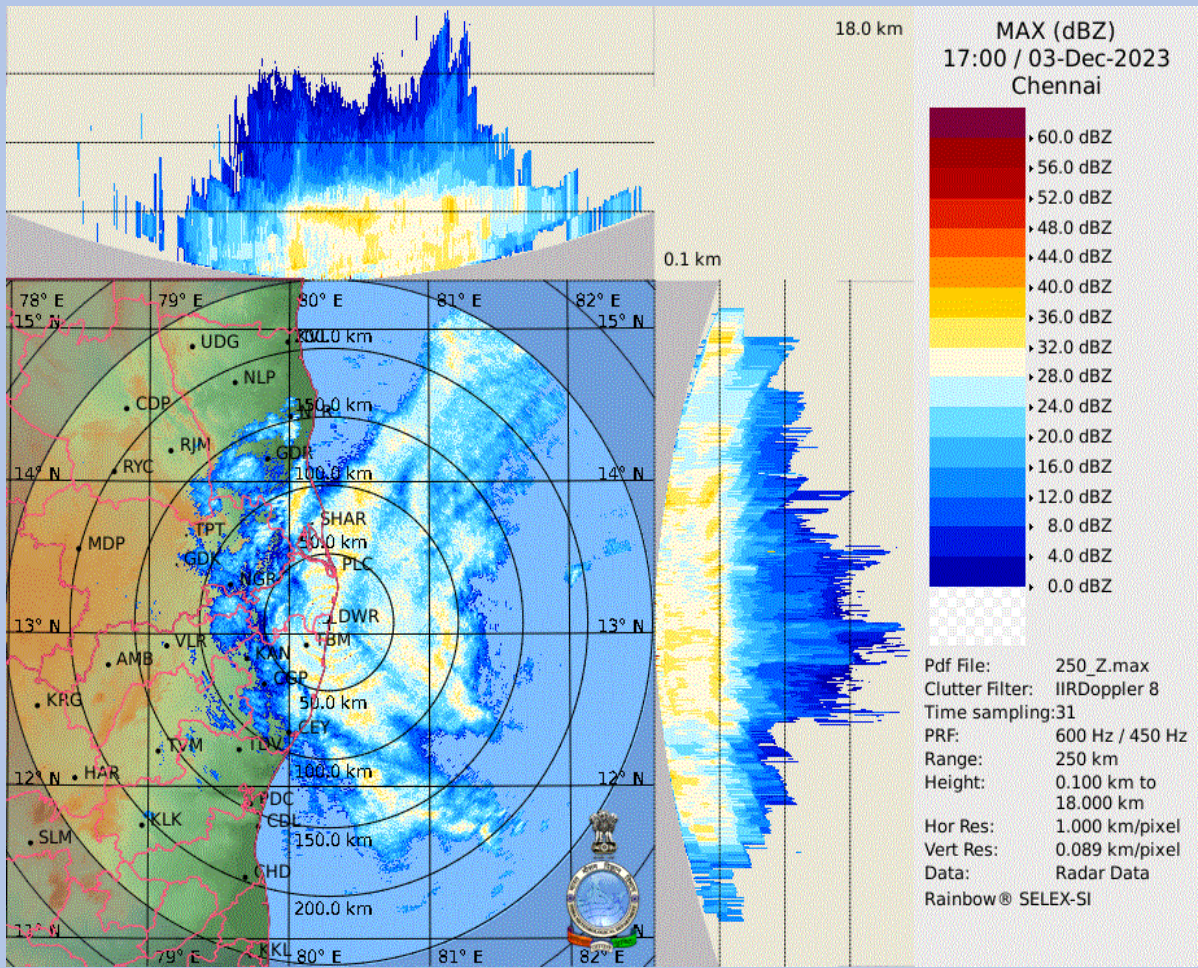




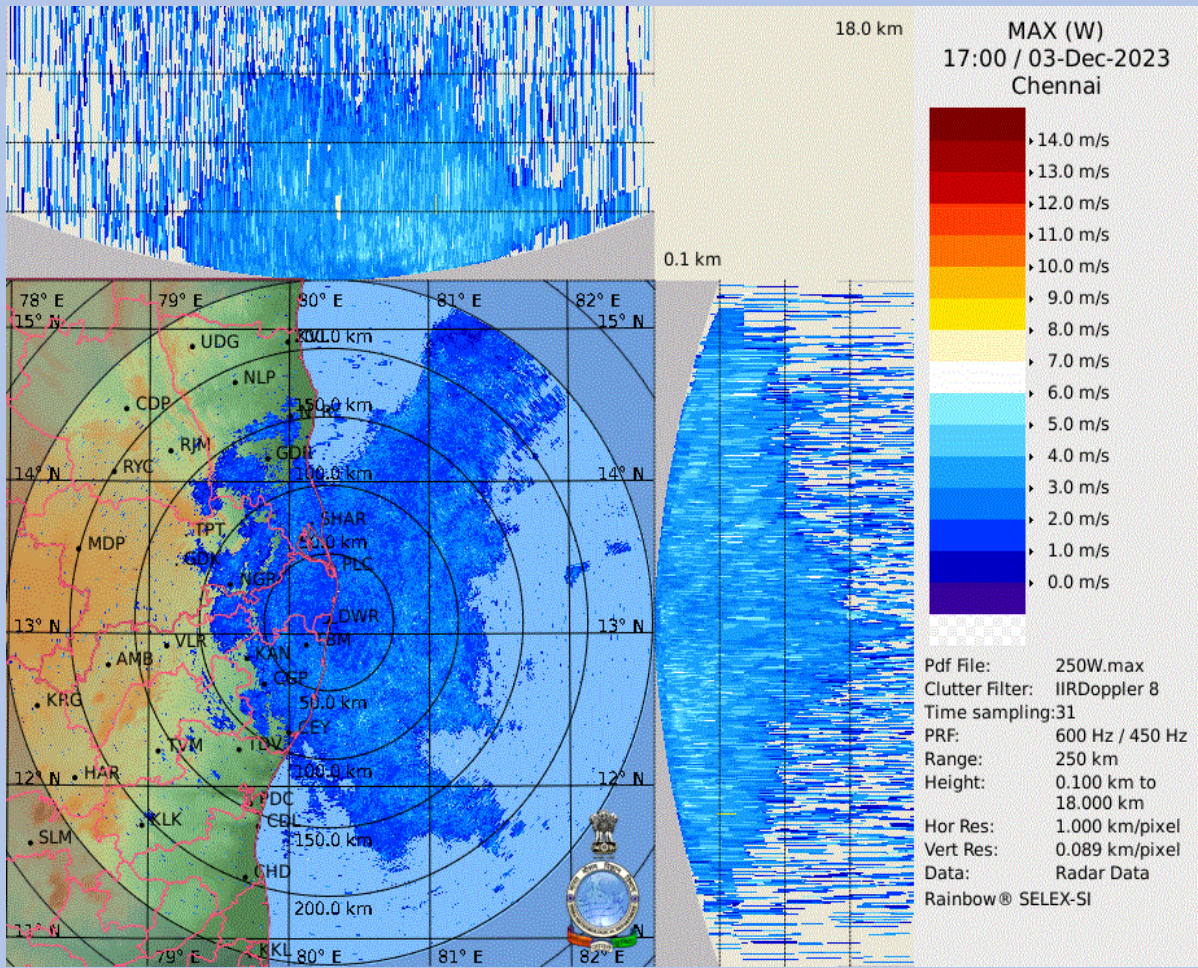


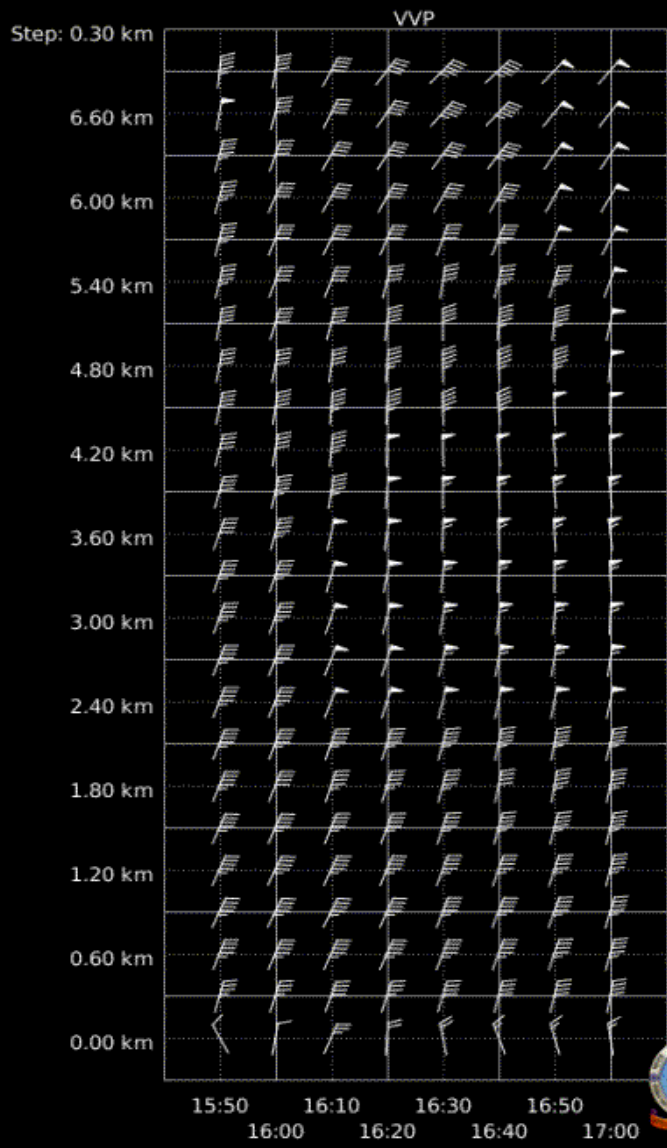












VVP (V)  
17:00 / 03-Dec-2023  
Chennai

Pdf File: 30.vvp  
Range: 0 km to 30 km  
Clutter Filter: IIRDoppler 8  
Time sampling: 31  
PRF: 600 Hz / 450 Hz  
Alg type: Complete  
Elevation: 0.2 deg to 21.0 deg  
Second reg: On



DWR Chennai, IMD  
Rainbow® SELEX-SI