

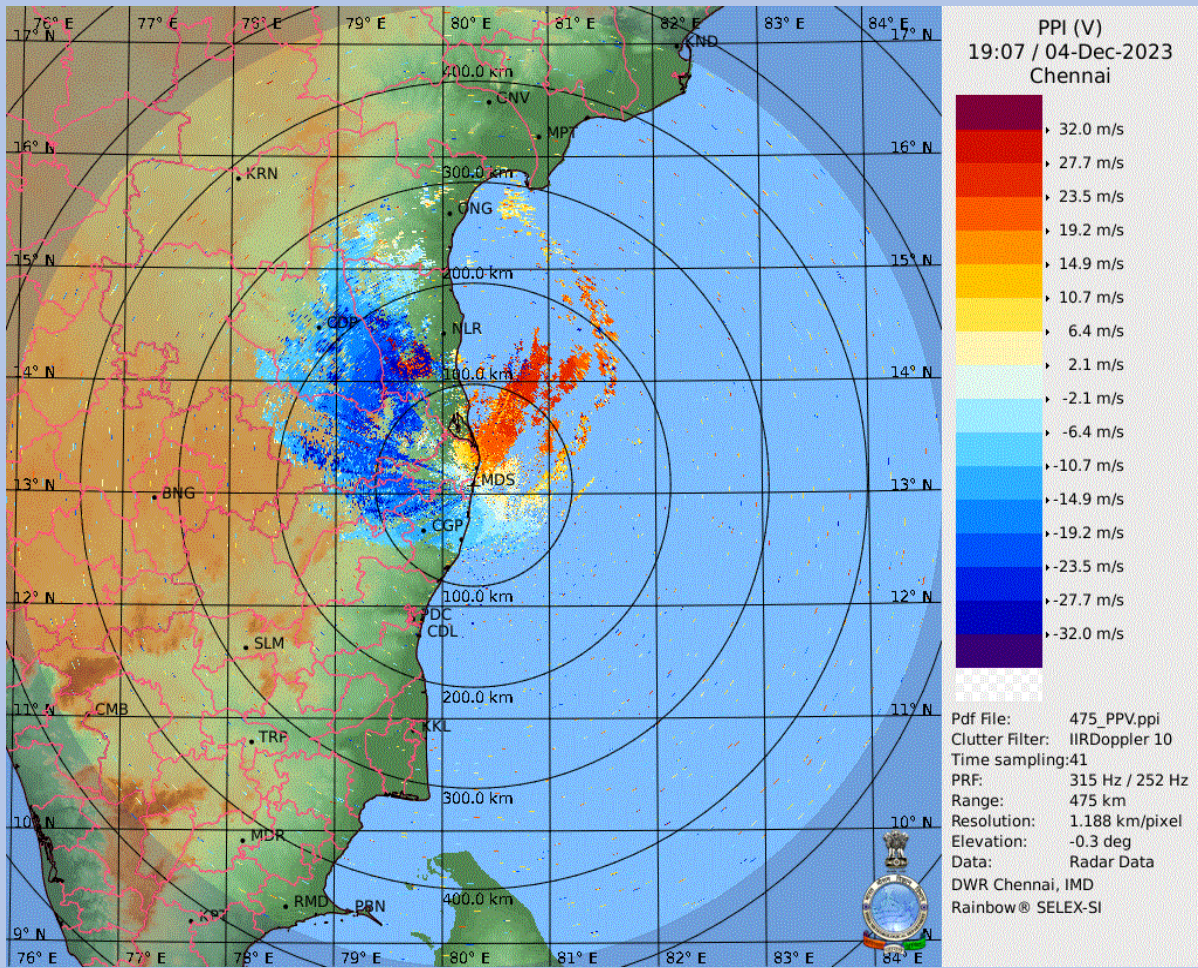
# DWR CHENNAI CYCLONE BULLETIN

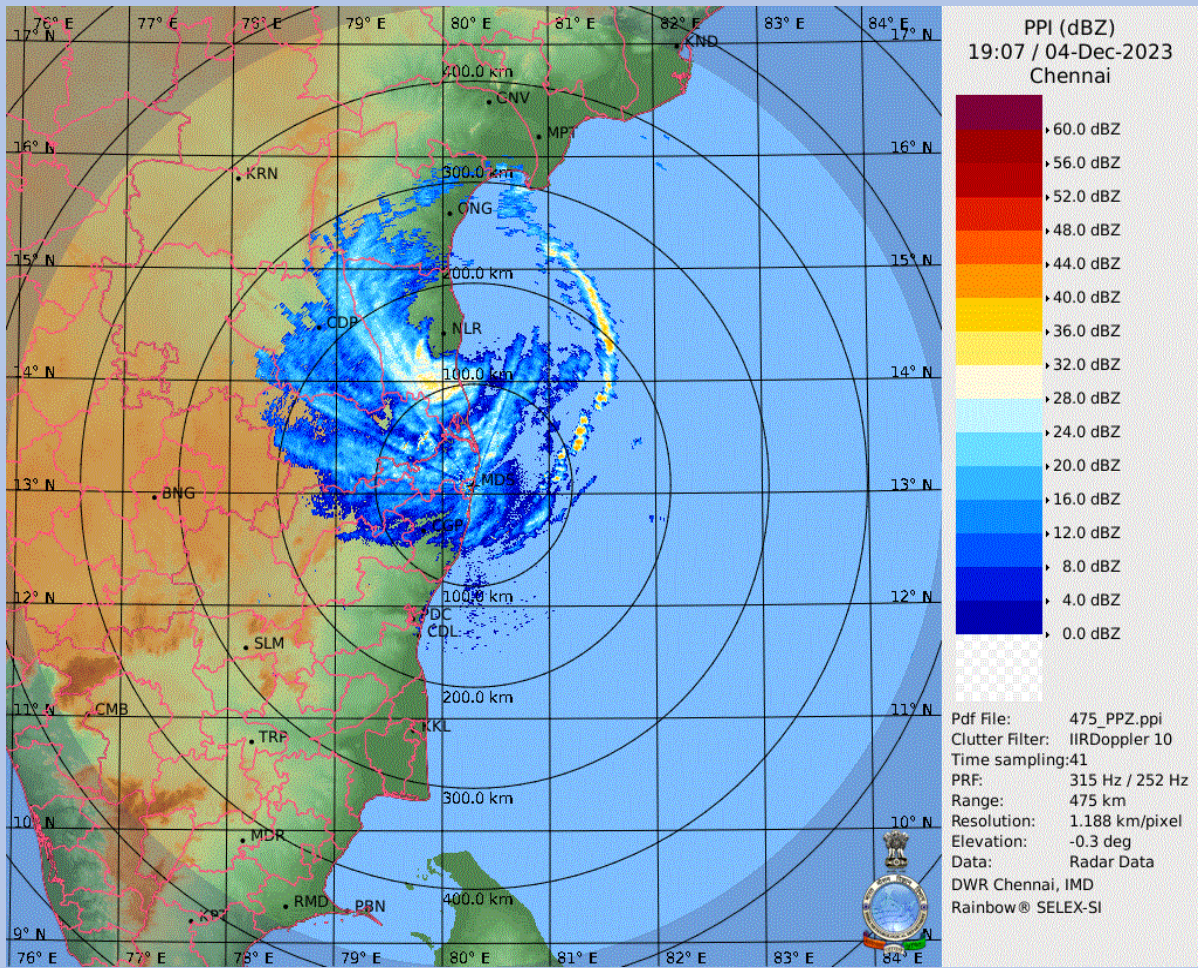
BULLETIN NO: **27**

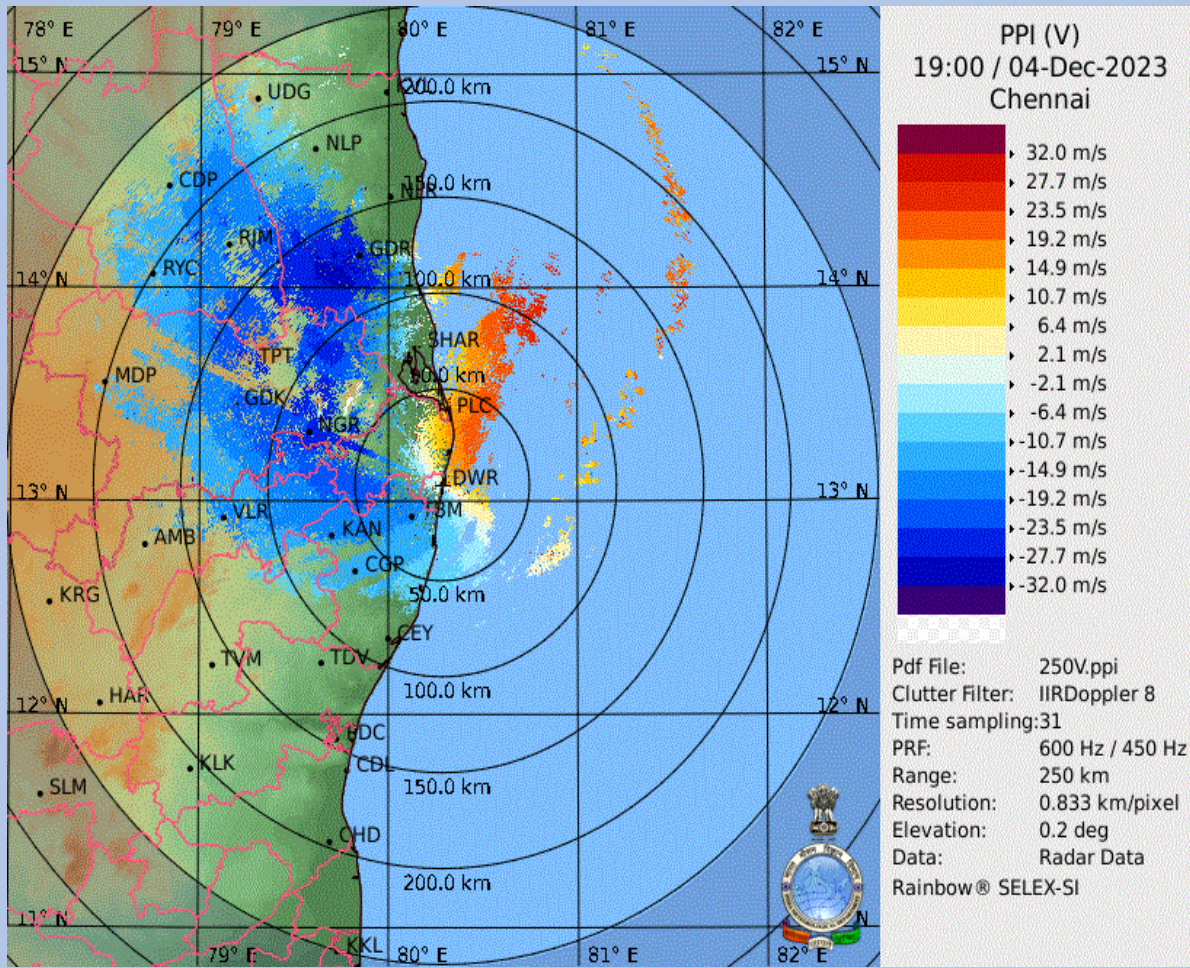
CYCLONE:**Michaung** TIME: 00:30 IST

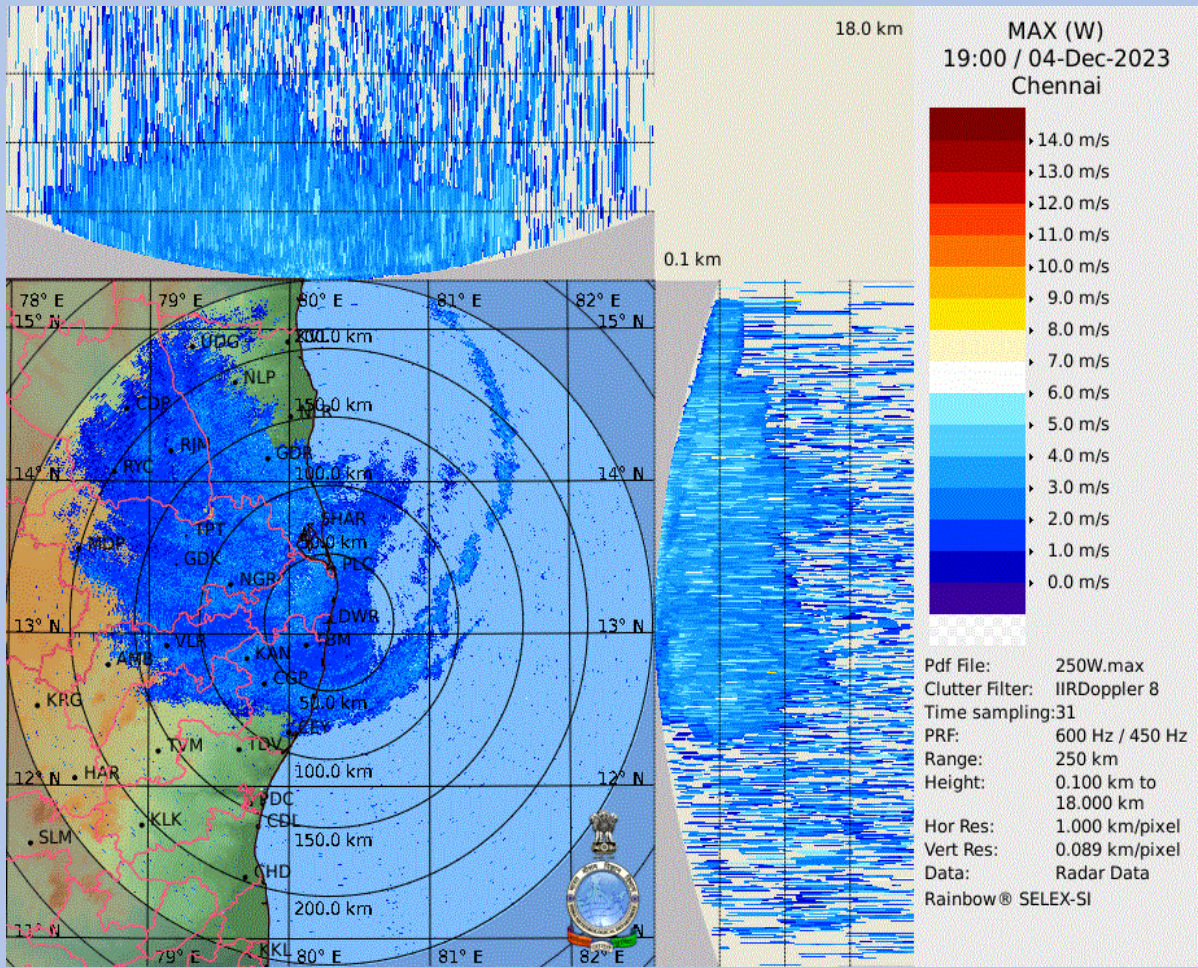
1.	Name of the station	<b>DWR CHENNAI</b>
2.	Date and Time of Observation (UTC)	<b>20231204 / 19:00 UTC</b>
3.	Name of the Cyclone	<b>Michaung</b>
4.	(A) Information about the eye of the Cyclone	
	a) Is the Eye Visible	<b>No</b>
	b) Shape of the Eye	<b>----</b>
	c) Diameter of the Eye(km)	<b>nankm / nankm</b>
	d) Estimation of centre of the cyclone based on Eye/spiral band observation	<b>14.5050<sup>0</sup>N,80.2667<sup>0</sup>E</b>
	(B) Other features of the cyclone	
	e) Echo top (height 20 dBZ level) of rain bearing clouds around the cyclone within 100 Km radius (km)	<b>13.26km</b>
	f) Maximum radar reflectivity (dBZ) in the eye wall/spiral band region,its height (km) and position (azimuth and distance from the radar)	<b>30.00 dBZ 5.00 km (338.80deg, 148.30km)</b>
	g) Maximum reflectivity at any other area (spiral/streamers etc)	<b>41.50dBZ 0.20km (68.60deg, 111.80km)</b>
	h) Maximum radial velocity in eye wall/spiral band region (mps), its height (km) and its position (azimuth and distance from the Radar)	<b>30.73m/s 2.00km (24.90deg, 130.60km)</b>
	i) Maximum velocity in any other area (spiral /streamers / rain shields etc)	<b>29.18m/s 2.00km (338.70deg, 134.40km)</b>
5.	Tendency of the Cyclone	
	1) Intensity(Increasing/Decreasing)	<b>Decreasing</b>
	2) Duration for which the information on movement pertains to	<b>10 hr</b>
	3) Direction of Movement	<b>NNW</b>
	4) Estimated speed of Movement	<b>11.98 kmph</b>
6.	Any other Significant Feature	<b>No clear Eye</b>
7.	Confidence	<b>POOR</b>

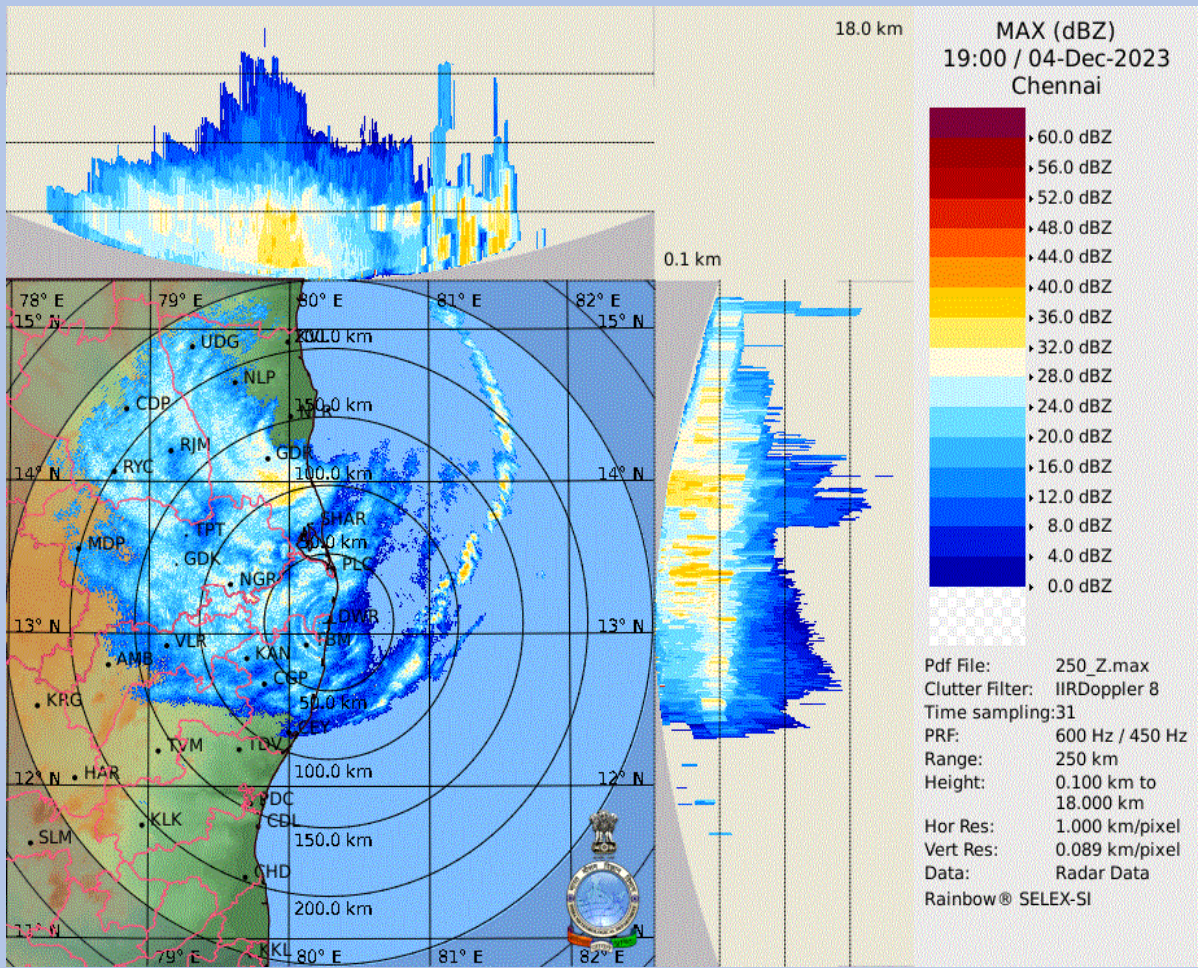
**OFFICER INCHARGE  
DWR Chennai**











Step: 0.30 km

VVP

6.60 km

6.00 km

5.40 km

4.80 km

4.20 km

3.60 km

3.00 km

2.40 km

1.80 km

1.20 km

0.60 km

0.00 km

17:50

18:10

18:30

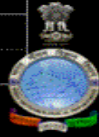
18:50

18:00

18:20

18:40

19:00



VVP (V)  
19:00 / 04-Dec-2023  
Chennai  
Pdf File: 30.vvp  
Range: 0 km to 30 km  
Clutter Filter: IIRDoppler 8  
Time sampling: 31  
PRF: 600 Hz / 450 Hz  
Alg type: Complete  
Elevation: 0.2 deg to 21.0 deg  
Second reg: On

DWR Chennai, IMD  
Rainbow® SELEX-SI