

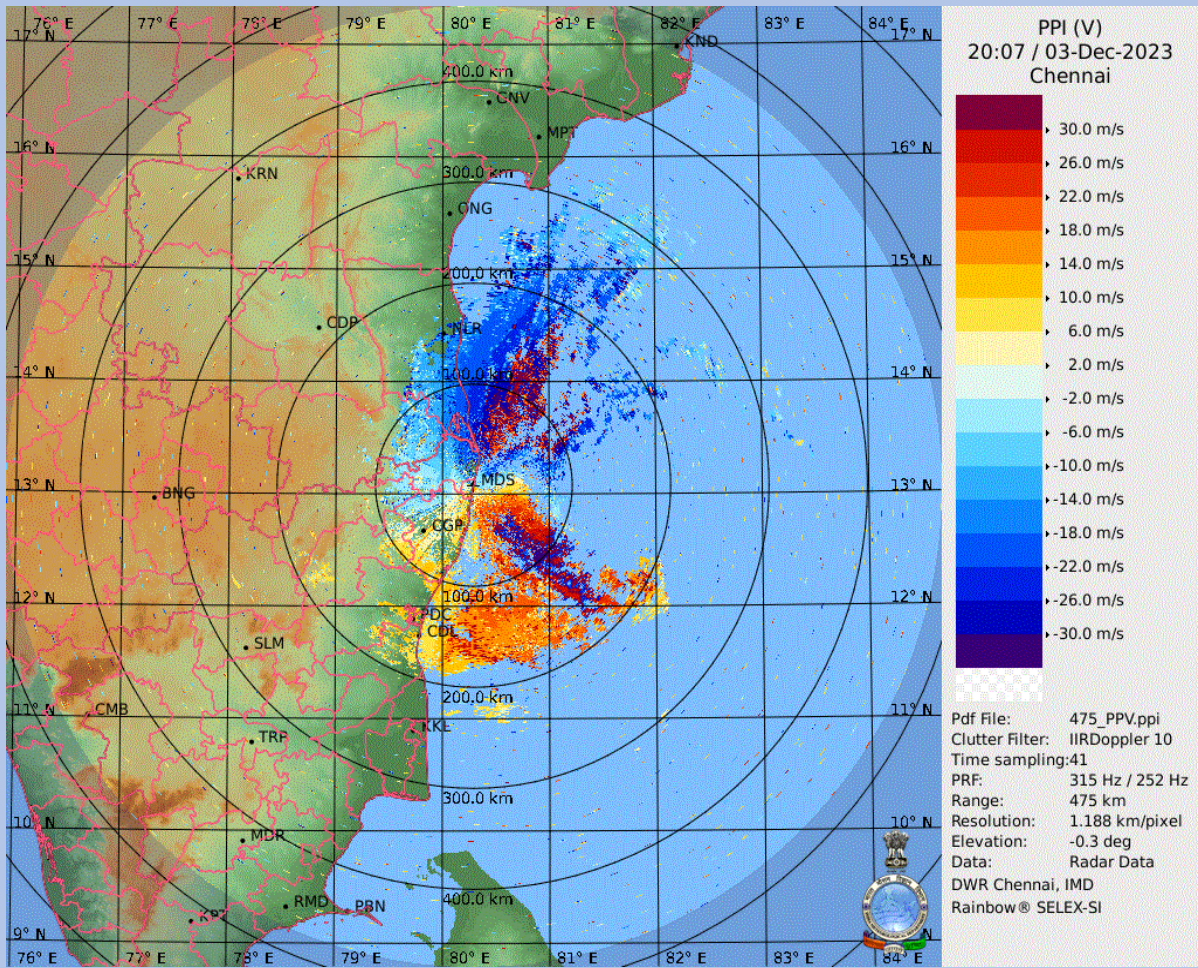
# DWR CHENNAI CYCLONE BULLETIN

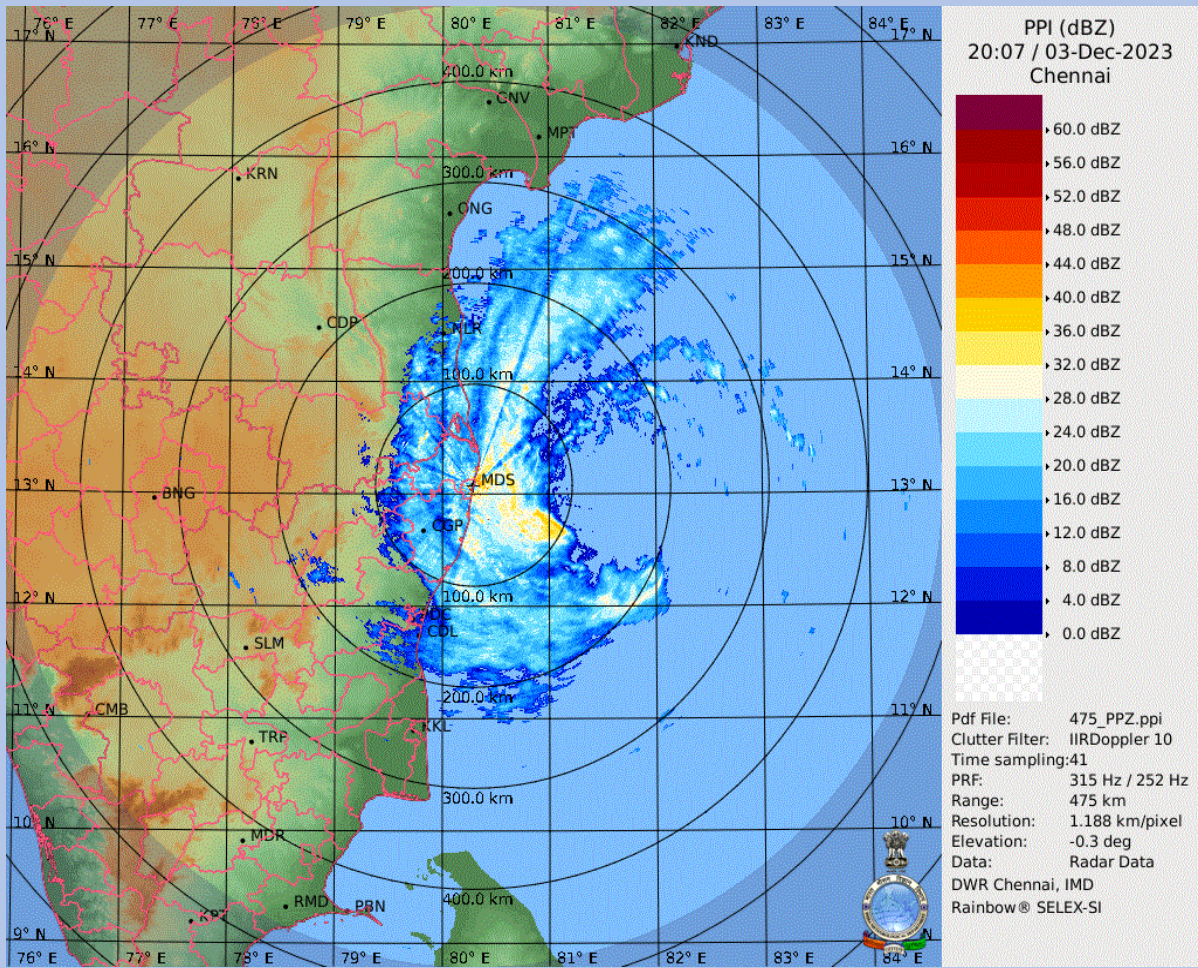
**BULLETIN NO: 8**

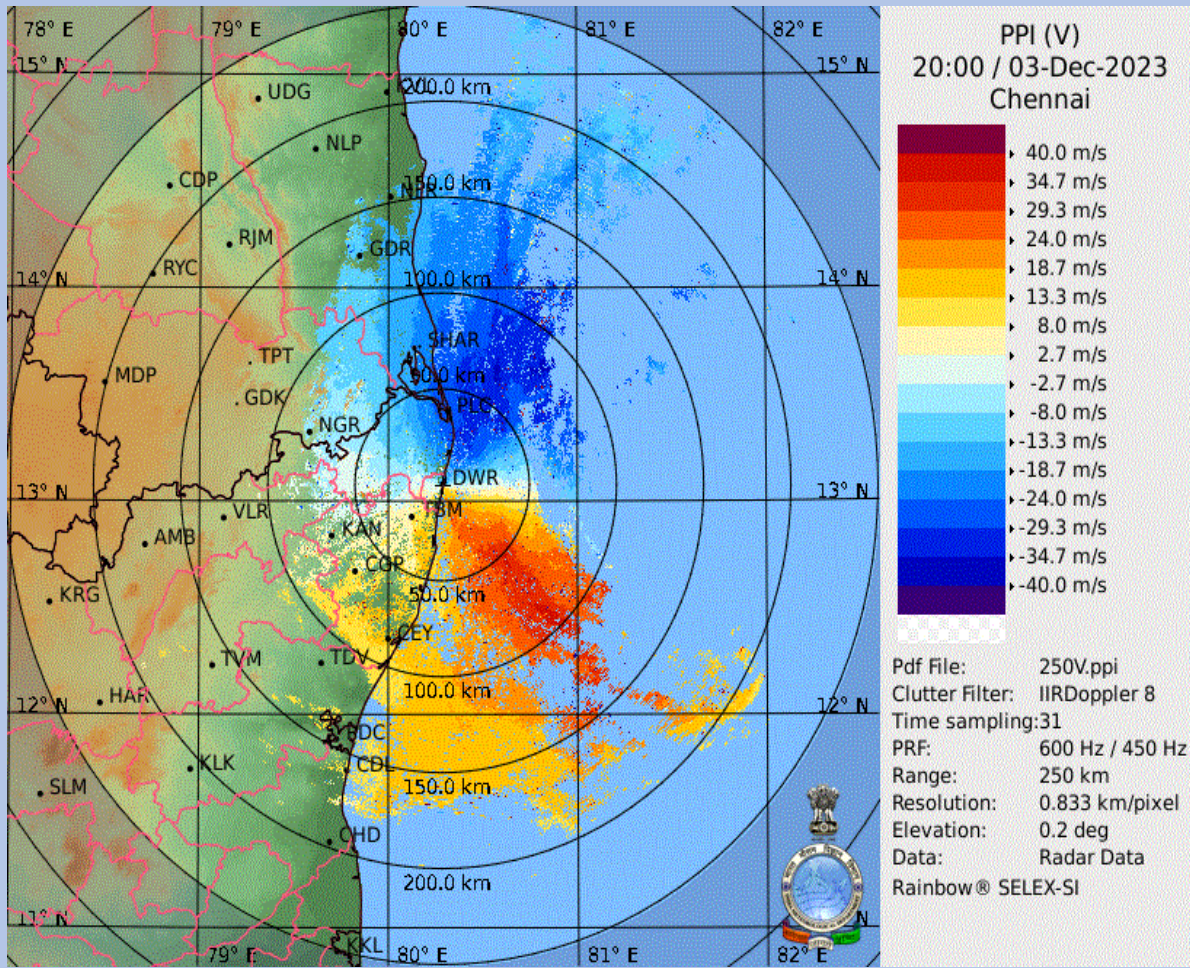
**CYCLONE:Michaung TIME: 01:30 IST**

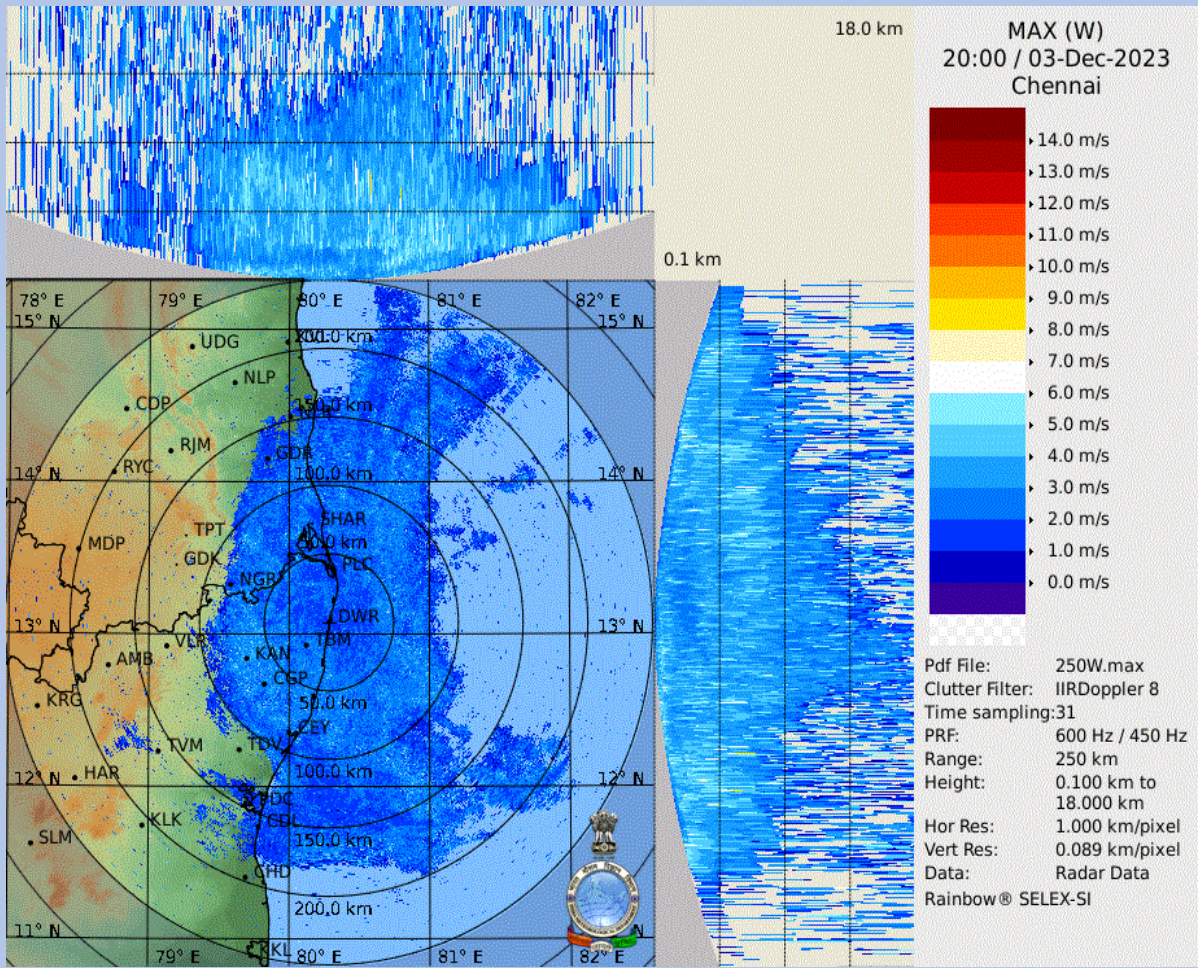
1.	Name of the station	<b>DWR CHENNAI</b>
2.	Date and Time of Observation (UTC)	<b>20231203 / 20:00 UTC</b>
3.	Name of the Cyclone	<b>Michaung</b>
4.	(A) Information about the eye of the Cyclone	
	a) Is the Eye Visible	<b>No</b>
	b) Shape of the Eye	<b>----</b>
	c) Diameter of the Eye(km)	<b>nankm / nankm</b>
	d) Estimation of centre of the cyclone based on Eye/spiral band observation	<b>12.9650<sup>0</sup>N,81.2550<sup>0</sup>E</b>
	(B) Other features of the cyclone	
	e) Echo top (height 20 dBZ level) of rain bearing clouds around the cyclone within 100 Km radius (km)	<b>8.79km</b>
	f) Maximum radar reflectivity (dBZ) in the eye wall/spiral band region,its height (km) and position (azimuth and distance from the radar)	<b>37.00 dBZ 4.00 km (112.00deg, 79.60km)</b>
	g) Maximum reflectivity at any other area (spiral/streamers etc)	<b>36.00dBZ 0.50km (340.50deg, 28.00km)</b>
	h) Maximum radial velocity in eye wall/spiral band region (mps), its height (km) and its position (azimuth and distance from the Radar)	<b>40.62m/s -0.05km (140.80deg, 57.60km)</b>
	i) Maximum velocity in any other area (spiral /streamers / rain shields etc)	<b>40.99m/s 2.00km (34.50deg, 103.40km)</b>
5.	Tendency of the Cyclone	
	1) Intensity(Increasing/Decreasing)	<b>increasing</b>
	2) Duration for which the information on movement pertains to	<b>6 hr</b>
	3) Direction of Movement	<b>W</b>
	4) Estimated speed of Movement	<b>22.16 kmph</b>
6.	Any other Significant Feature	<b>Trocoidal Motion seen</b>
7.	Confidence	<b>POOR</b>

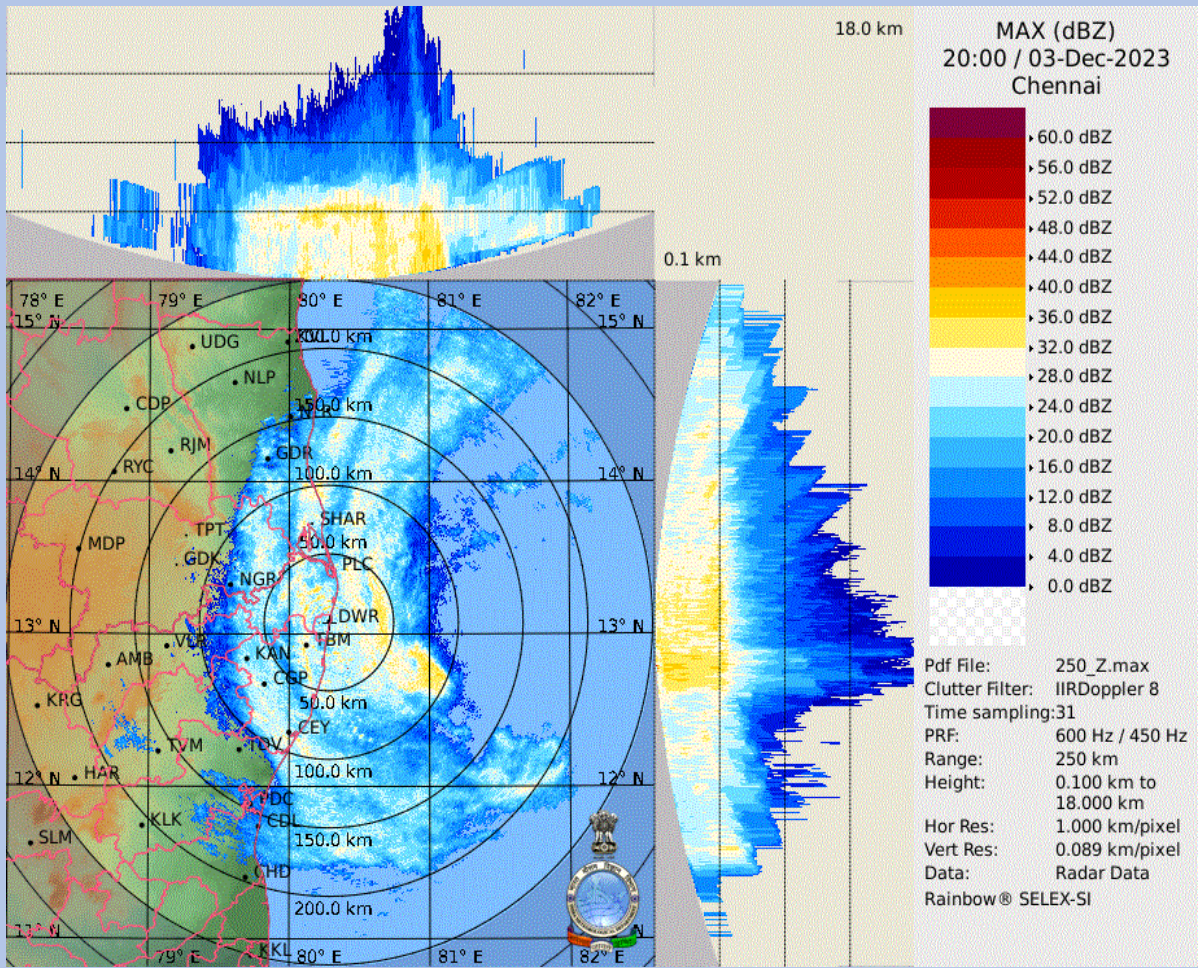
**OFFICER INCHARGE  
DWR Chennai**







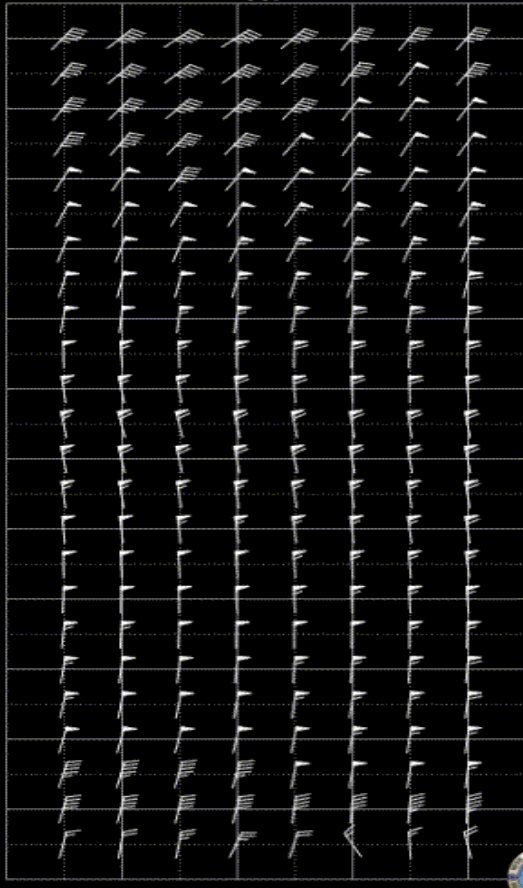




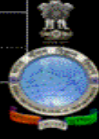
Step: 0.30 km

VVP

6.60 km  
6.00 km  
5.40 km  
4.80 km  
4.20 km  
3.60 km  
3.00 km  
2.40 km  
1.80 km  
1.20 km  
0.60 km  
0.00 km



18:50 19:10 19:30 19:50  
19:00 19:20 19:40 20:00



VVP (V)  
20:00 / 03-Dec-2023  
Chennai  
Pdf File: 30.vvp  
Range: 0 km to 30 km  
Clutter Filter: IIRDoppler 8  
Time sampling:31  
PRF: 600 Hz / 450 Hz  
Alg type: Complete  
Elevation: 0.2 deg to 21.0 deg  
Second reg: On

DWR Chennai, IMD  
Rainbow® SELEX-SI