

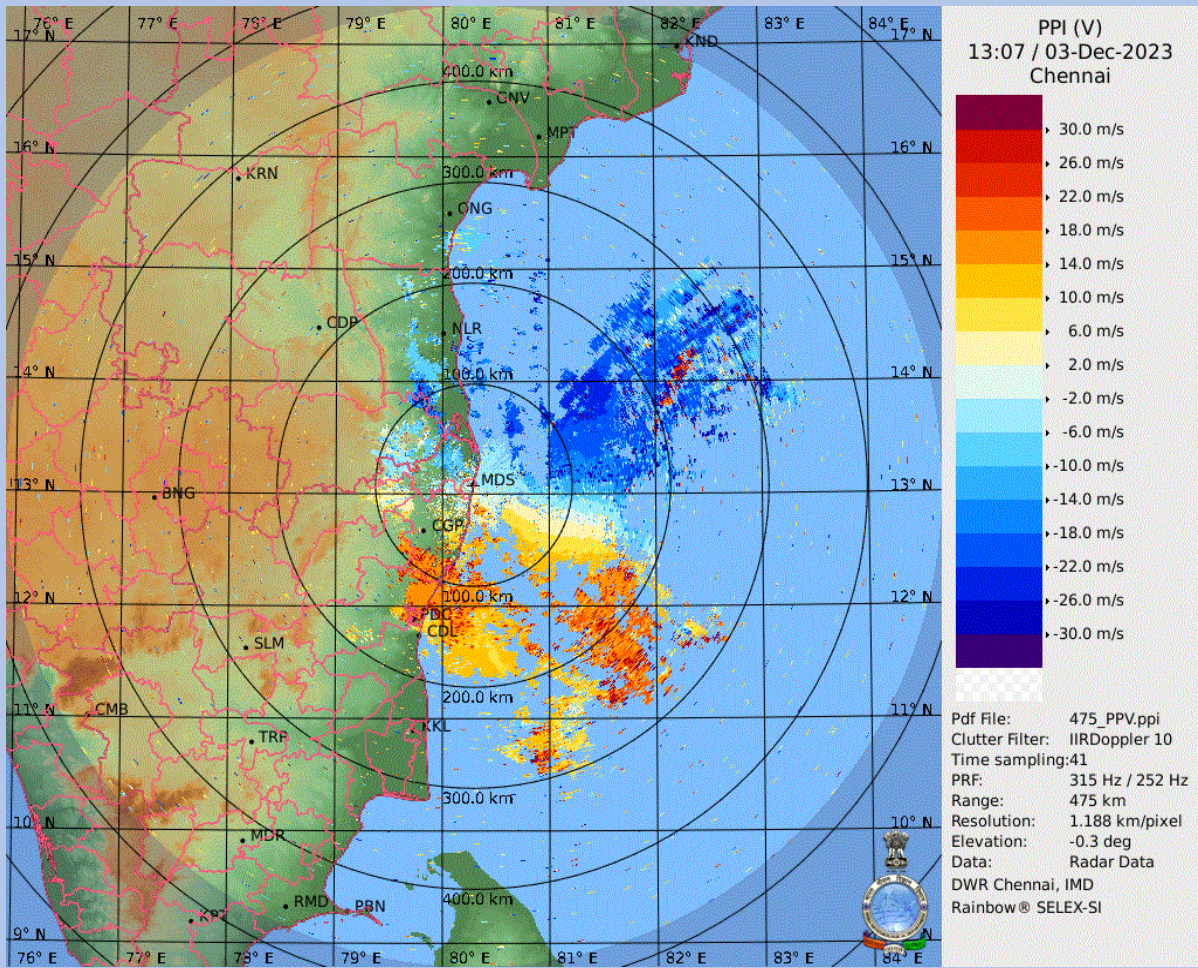
# DWR CHENNAI CYCLONE BULLETIN

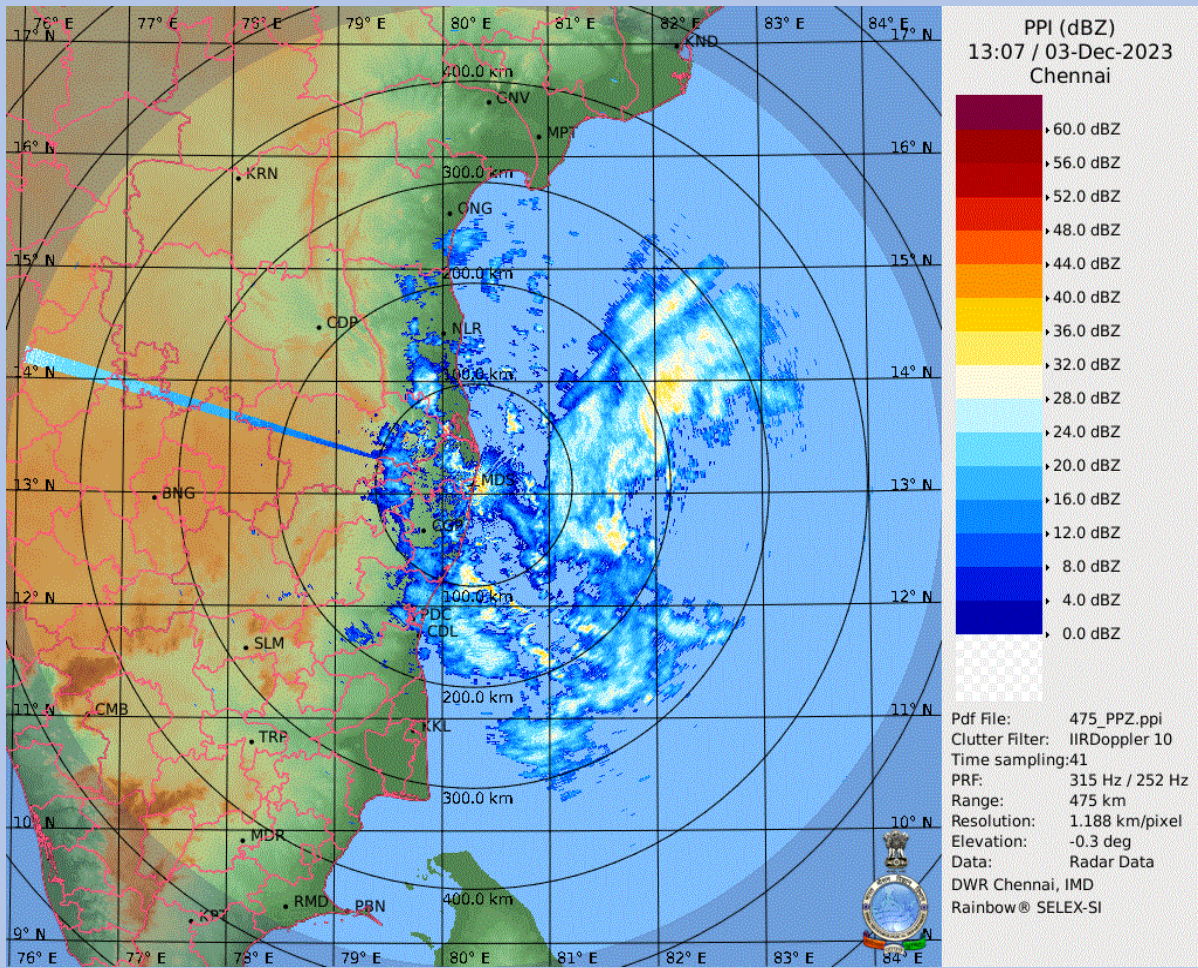
**BULLETIN NO: 1**

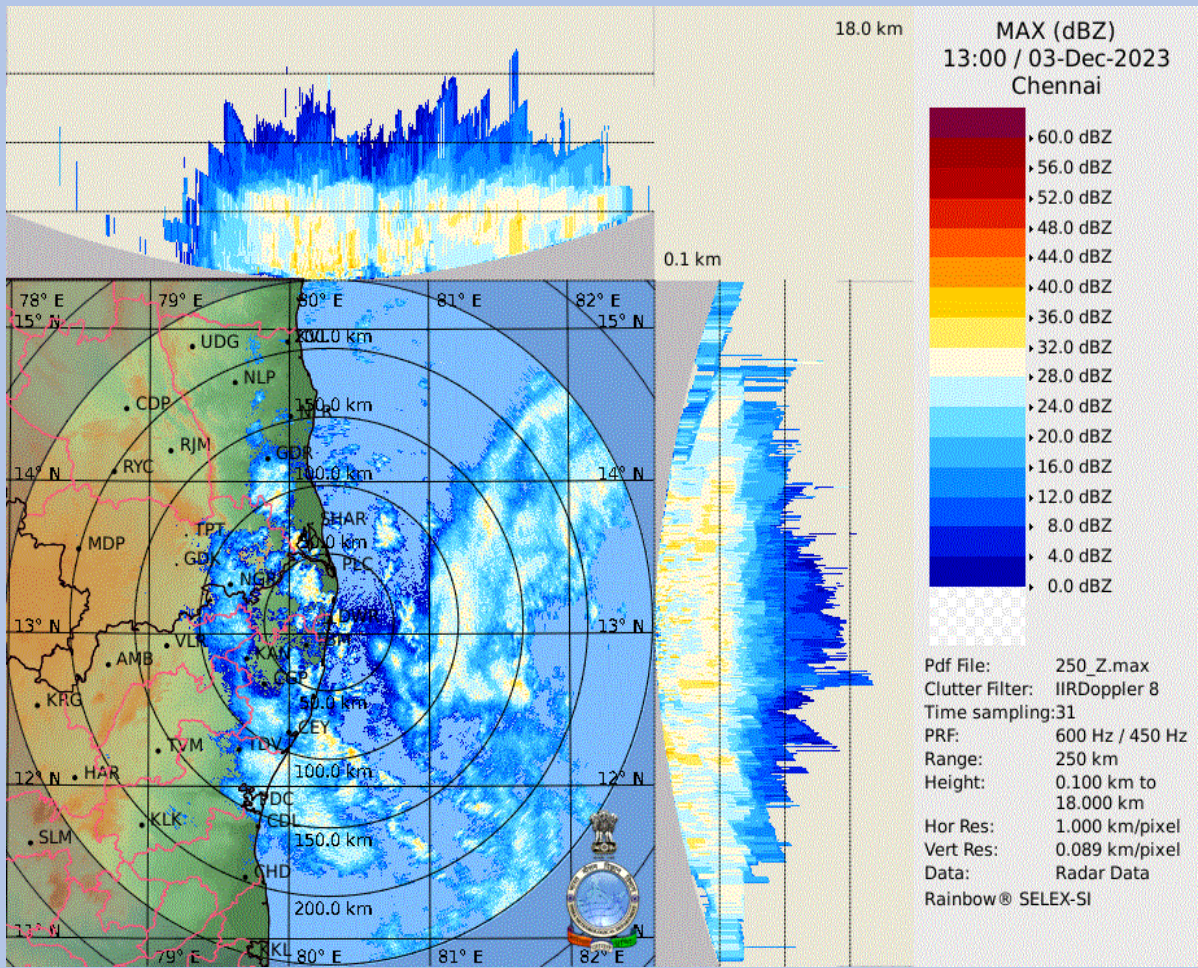
**CYCLONE:Michaung TIME: 18:30 IST**

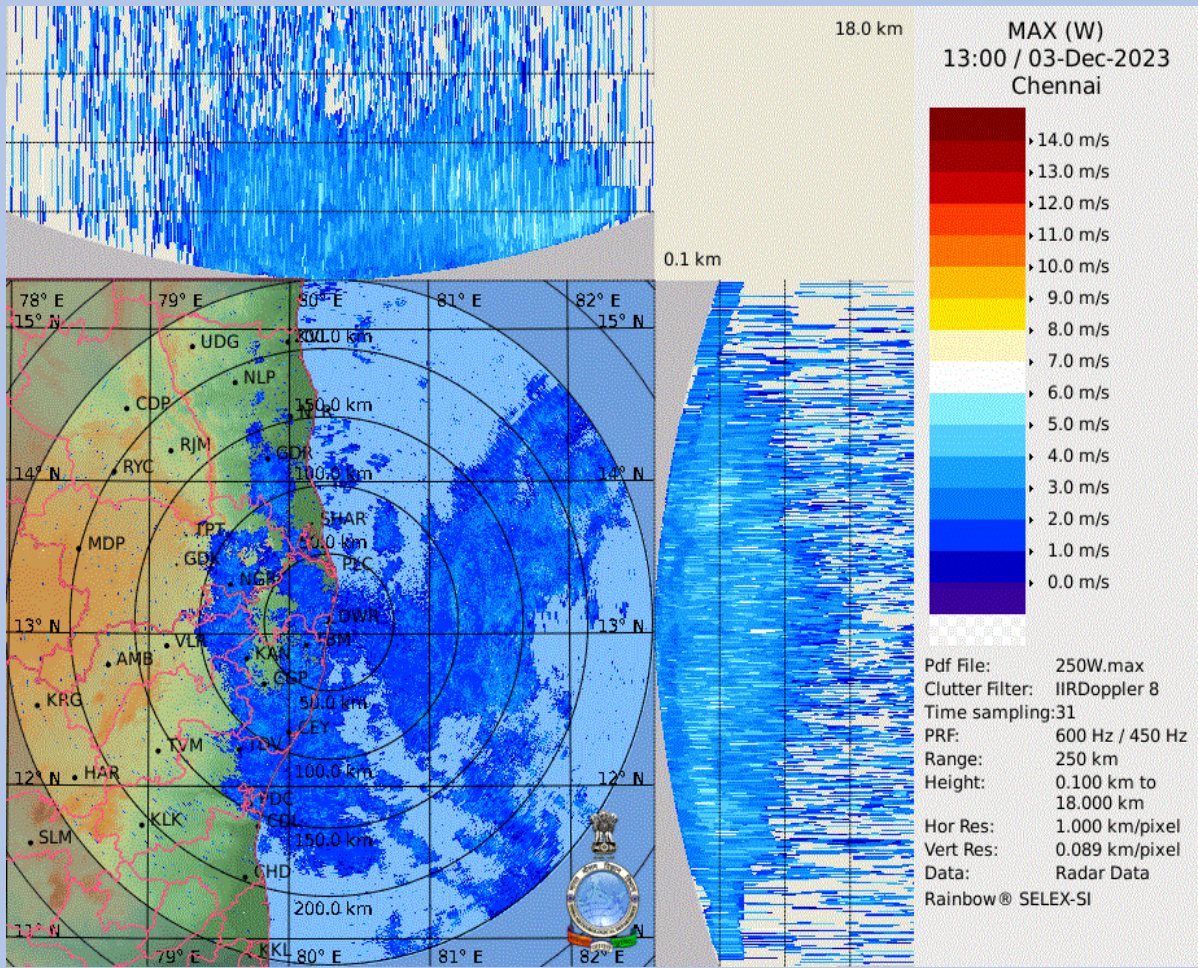
1.	Name of the station	<b>DWR CHENNAI</b>
2.	Date and Time of Observation (UTC)	<b>20231203 / 13:00 UTC</b>
3.	Name of the Cyclone	<b>Michaung</b>
4.	(A) Information about the eye of the Cyclone	
	a) Is the Eye Visible	<b>No</b>
	b) Shape of the Eye	<b>nan</b>
	c) Diameter of the Eye(km)	<b>nankm / nankm</b>
	d) Estimation of centre of the cyclone based on Eye/spiral band observation	<b>12.3333<sup>0</sup>N,82.2420<sup>0</sup>E</b>
	(B) Other features of the cyclone	
	e) Echo top (height 20 dBZ level) of rain bearing clouds around the cyclone within 100 Km radius (km)	<b>7.02km</b>
	f) Maximum radar reflectivity (dBZ) in the eye wall/spiral band region,its height (km) and position (azimuth and distance from the radar)	<b>31.00 dBZ 5.00 km (110.50deg, 160.20km)</b>
	g) Maximum reflectivity at any other area (spiral/streamers etc)	<b>43.00dBZ 0.01km (82.90deg, 10.30km)</b>
	h) Maximum radial velocity in eye wall/spiral band region (mps), its height (km) and its position (azimuth and distance from the Radar)	<b>30.99m/s 3.46km (121.20deg, 289.30km)</b>
	i) Maximum velocity in any other area (spiral /streamers / rain shields etc)	<b>32.03m/s 1.78km (63.40deg, 221.50km)</b>
5.	Tendency of the Cyclone	
	1) Intensity(Increasing/Decreasing)	<b>No Change</b>
	2) Duration for which the information on movement pertains to	<b>1 hr</b>
	3) Direction of Movement	<b>NNW</b>
	4) Estimated speed of Movement	<b>31.15 kmph</b>
6.	Any other Significant Feature	<b>nan</b>
7.	Confidence	<b>POOR</b>

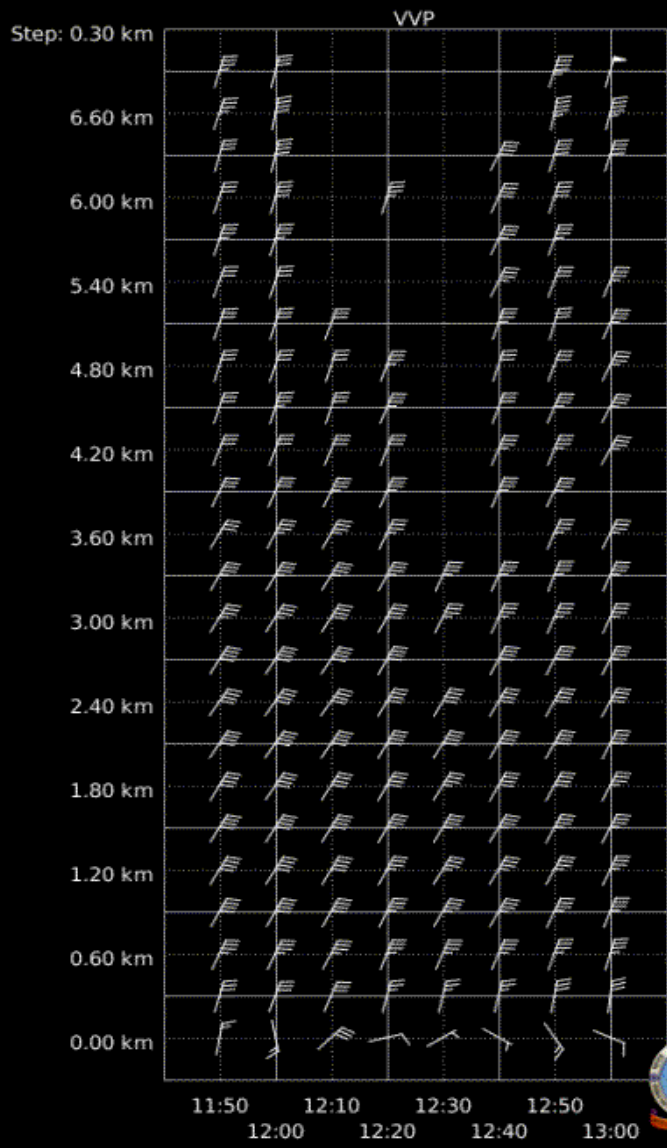
**OFFICER INCHARGE  
DWR Chennai**











VVP (V)  
13:00 / 03-Dec-2023  
Chennai

Pdf File: 30.vvp  
Range: 0 km to 30 km  
Clutter Filter: IIRDoppler 8  
Time sampling:31  
PRF: 600 Hz / 450 Hz  
Alg type: Complete  
Elevation: 0.2 deg to 21.0 deg  
Second reg: On



DWR Chennai, IMD  
Rainbow® SELEX-SI