

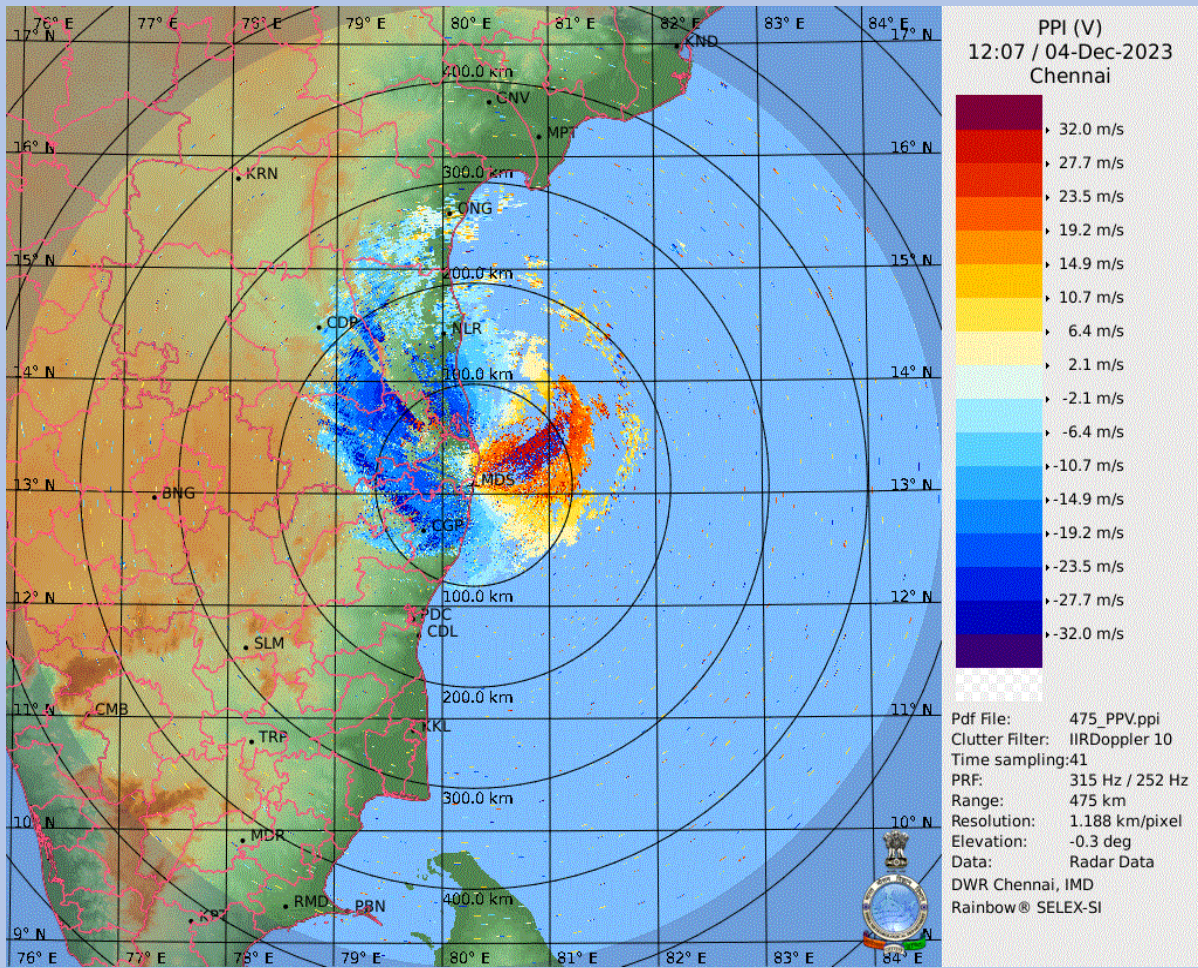
DWR CHENNAI CYCLONE BULLETIN

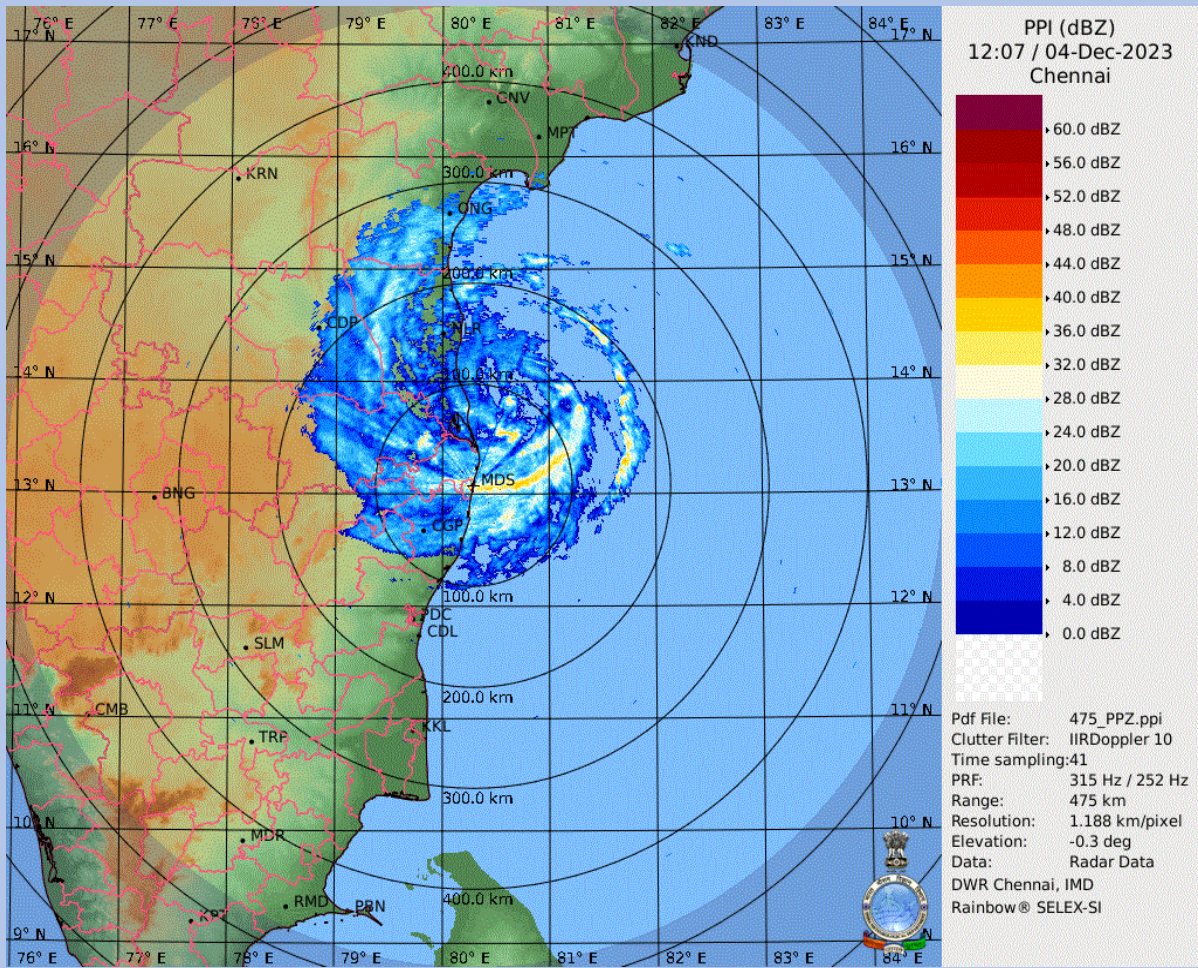
BULLETIN NO: 24

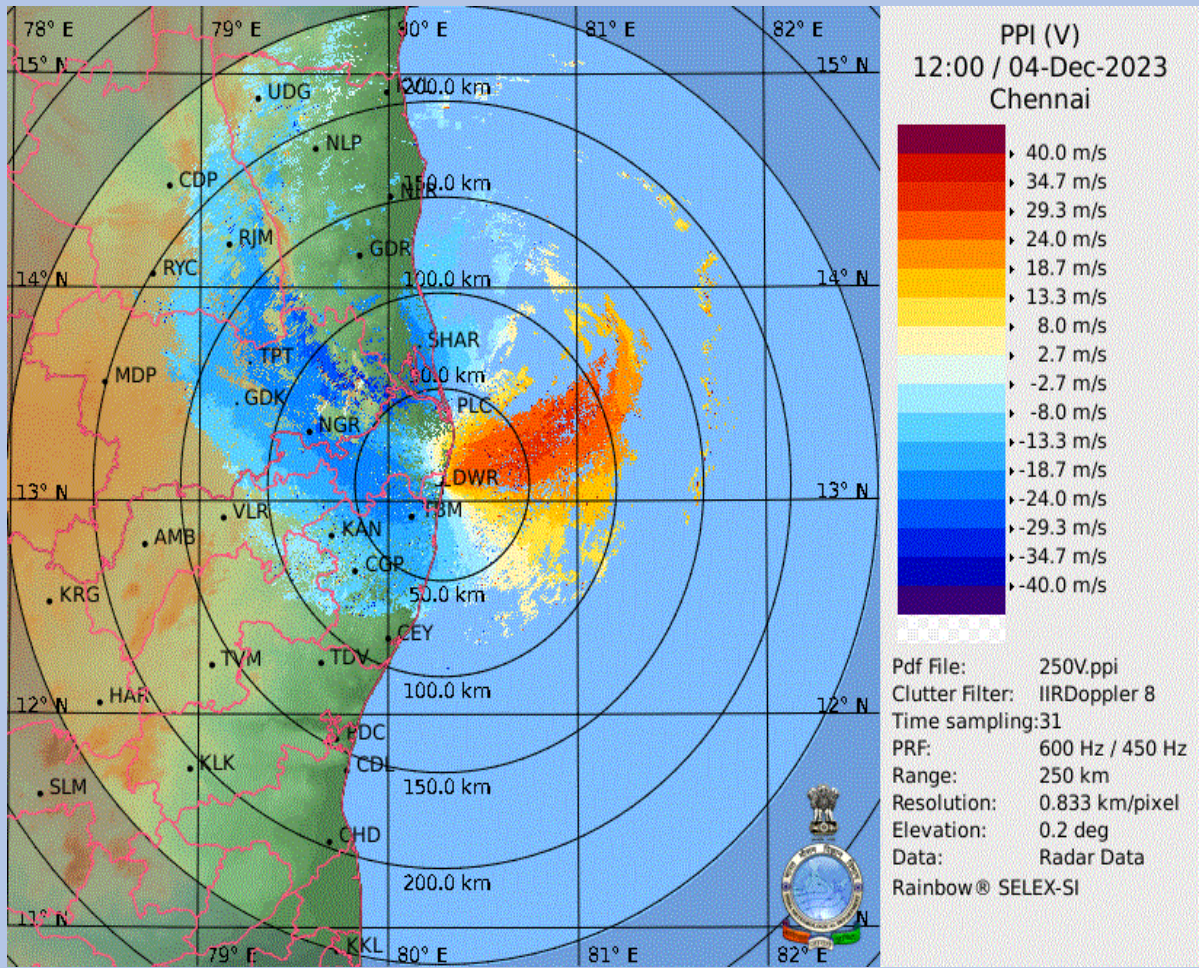
CYCLONE:Michaung TIME: 17:30 IST

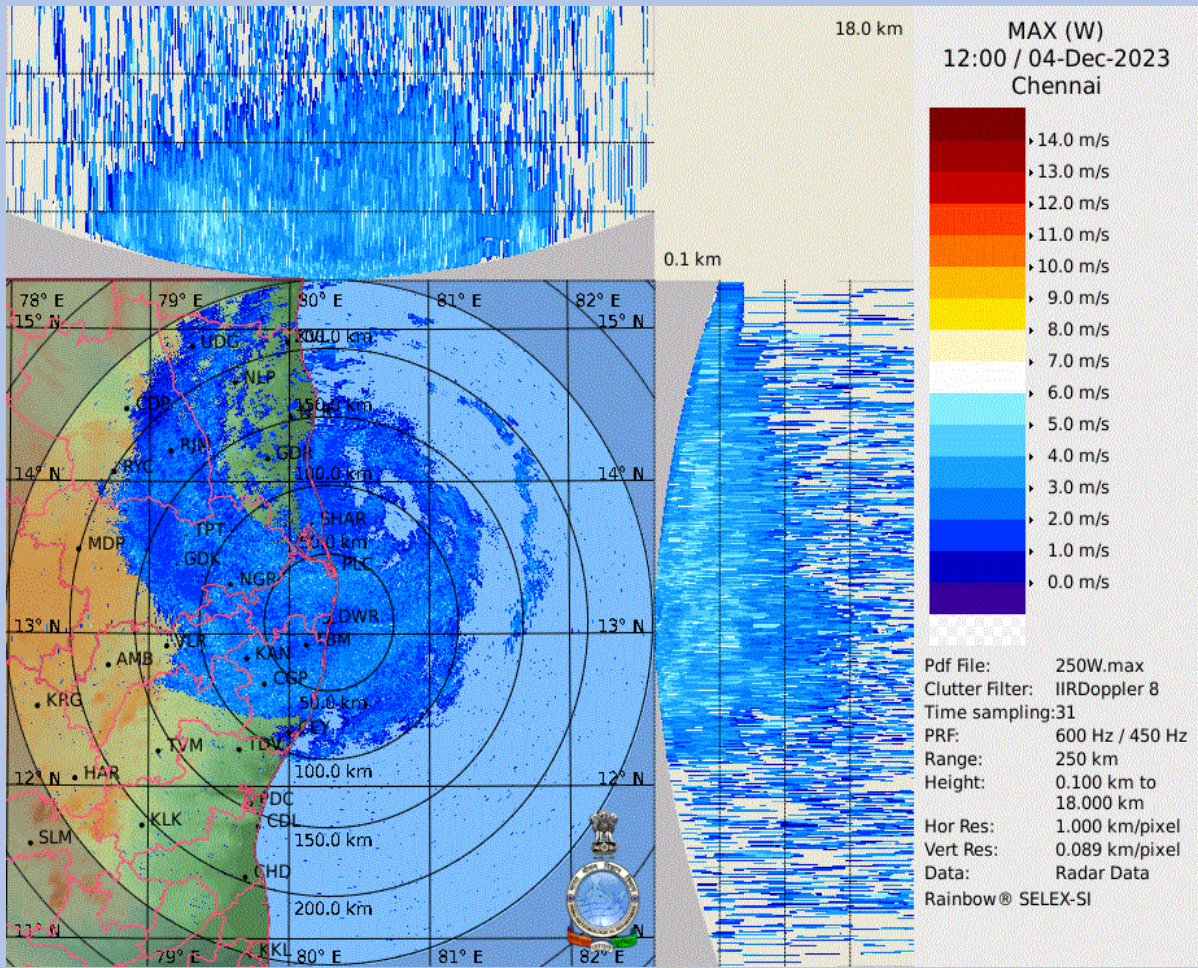
1.	Name of the station	DWR CHENNAI
2.	Date and Time of Observation (UTC)	20231204 / 12:00 UTC
3.	Name of the Cyclone	Michaung
4.	(A) Information about the eye of the Cyclone	
	a) Is the Eye Visible	Yes
	b) Shape of the Eye	Closed, irregular
	c) Diameter of the Eye(km)	55.00km / 55.00km
	d) Estimation of centre of the cyclone based on Eye/spiral band observation	13.9447⁰N,80.6763⁰E
	(B) Other features of the cyclone	
	e) Echo top (height 20 dBZ level) of rain bearing clouds around the cyclone within 100 Km radius (km)	9.50km
	f) Maximum radar reflectivity (dBZ) in the eye wall/spiral band region,its height (km) and position (azimuth and distance from the radar)	38.00 dBZ 3.00 km (33.90deg, 64.50km)
	g) Maximum reflectivity at any other area (spiral/streamers etc)	34.50dBZ 3.00km (274.00deg, 107.60km)
	h) Maximum radial velocity in eye wall/spiral band region (mps), its height (km) and its position (azimuth and distance from the Radar)	31.02m/s 1.00km (59.90deg, 84.70km)
	i) Maximum velocity in any other area (spiral /streamers / rain shields etc)	35.08m/s 2.00km (317.60deg, 180.20km)
5.	Tendency of the Cyclone	
	1) Intensity(Increasing/Decreasing)	Increasing
	2) Duration for which the information on movement pertains to	6 hr
	3) Direction of Movement	NNW
	4) Estimated speed of Movement	13.80 kmph
6.	Any other Significant Feature	Reorganizing Eye, Eye wall about to touch the coast Near GUDUR (S. of Nellore)
7.	Confidence	GOOD

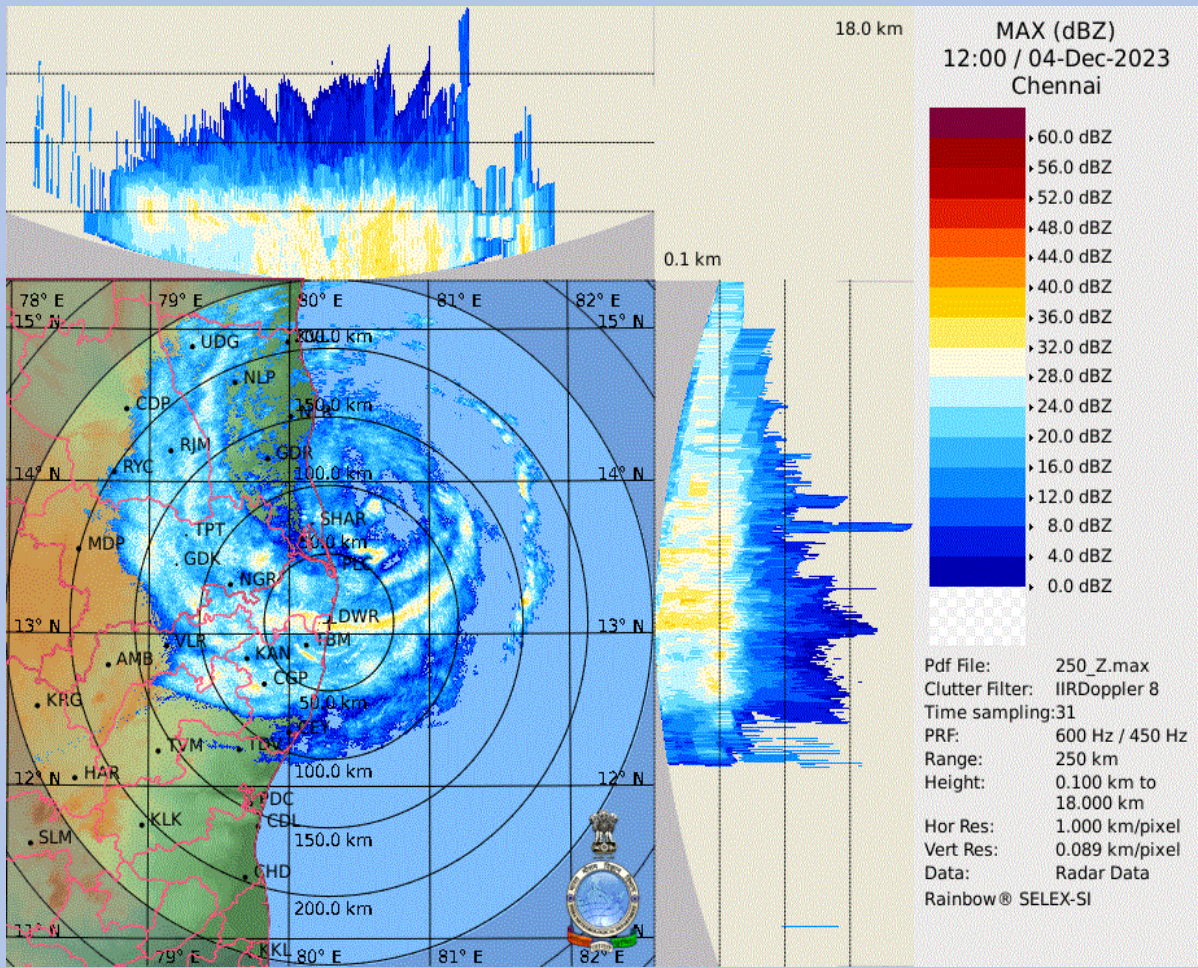
**OFFICER INCHARGE
DWR Chennai**





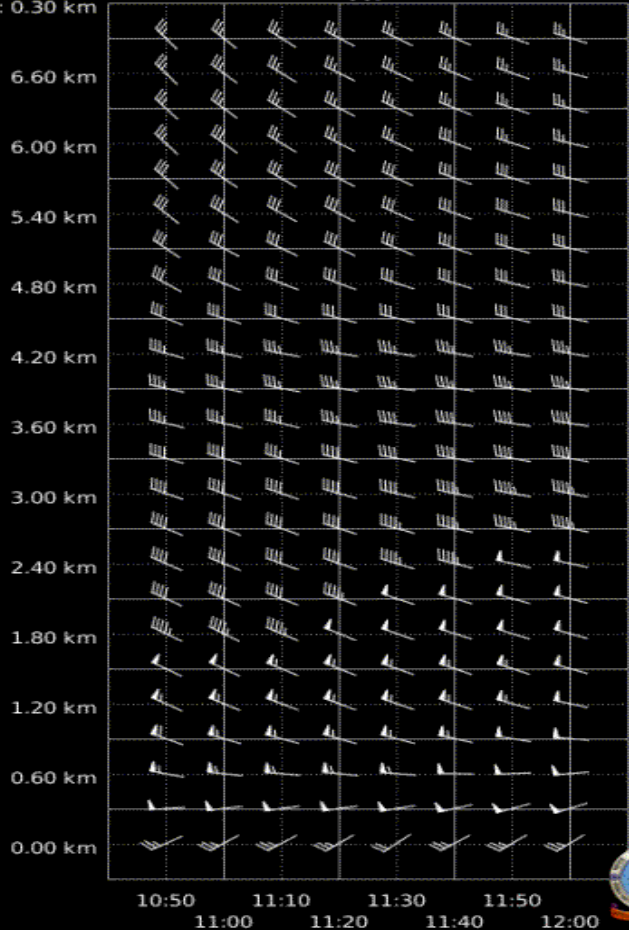






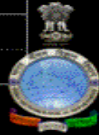
Step: 0.30 km

VVP



VVP (V)
12:00 / 04-Dec-2023
Chennai

Pdf File: 30.vvp
Range: 0 km to 30 km
Clutter Filter: IIRDoppler 8
Time sampling: 31
PRF: 600 Hz / 450 Hz
Alg type: Complete
Elevation: 0.2 deg to 21.0 deg
Second reg: On



DWR Chennai, IMD
Rainbow® SELEX-SI