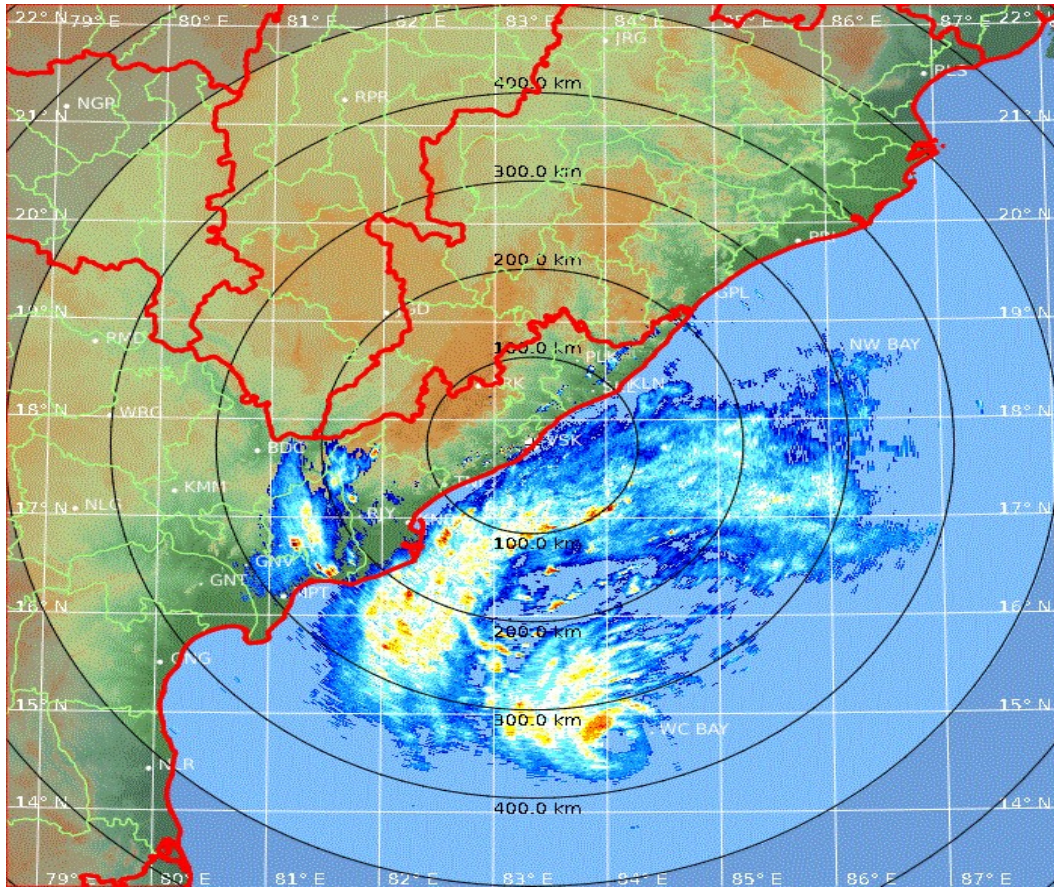


DWR VIZAG CYCLONE BULLETIN

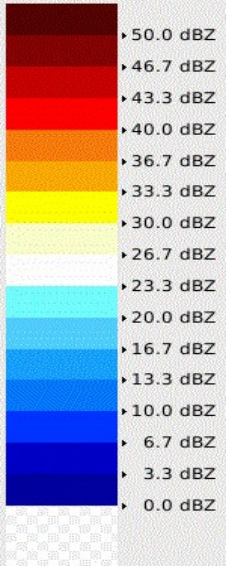
CYCLONE BULLETIN NO: 5 CYCLONE: FANI TIME: 01/05/2019 17:00 IST

1.	Name of the station	DWR VSK
2.	Date and Time of Observation (UTC)	1100 UTC
3.	Name of the Cyclone	FANI
4.	Information about the eye of the Cyclone	
	a. Is the Eye Visible	Yes
	b. Shape of the Eye	Circular
	c. Diameter of the Eye(km)	27.3 km
	d. Estimation of centre of the cyclone based on Eye/spiral band observation	14.73N 84.06 E Azi- 167 Dist-344 km from VSK
	e. Echo top (height 20 dBZ level) of rain bearing clouds around the cyclone within 100 Km radius (km)	-
	f. Maximum radar reflectivity (dBZ) & rainfall rate (mm/h) in the eye wall/spiral band region, its height (km) and position (azimuth and distance from the radar)	41dbZ, 7.7km(Height)/168.7Deg/324km
	g. Maximum reflectivity at any other area (spiral/streamers etc)	-
	h. Maximum radial velocity in eye wall/spiral band region (mps), its height (km) and its position (azimuth and distance from the Radar)	-
	i. Maximum velocity in any other area (spiral / streamers / rain shields etc)	-
5.	Tendency of the Cyclone	
	a. Intensity(Increasing/Decreasing)	Same
	b. Duration for which the information on movement pertains to	1 hour
	c. Direction of Movement	North
	d. Estimated speed of Movement	15 kmph
6.	Any other Significant Feature	-
7.	Confidence	Fair

Bibraj R
OFFICER IN CHARGE
DWR VISAKHAPATNAM



PPI (dBZ)
11:00 / 01-May-2019
Visakhapatnam



Pdf File: 500_PPZ.ppi
 Clutter Filter: IIRDoppler 10
 Time sampling: 16
 PRF: 300 Hz
 Range: 500 km
 Resolution: 1.429 km/pixel
 Elevation: 0.2 deg
 Data: Radar Data
 Rainbow® SELEX-SI