

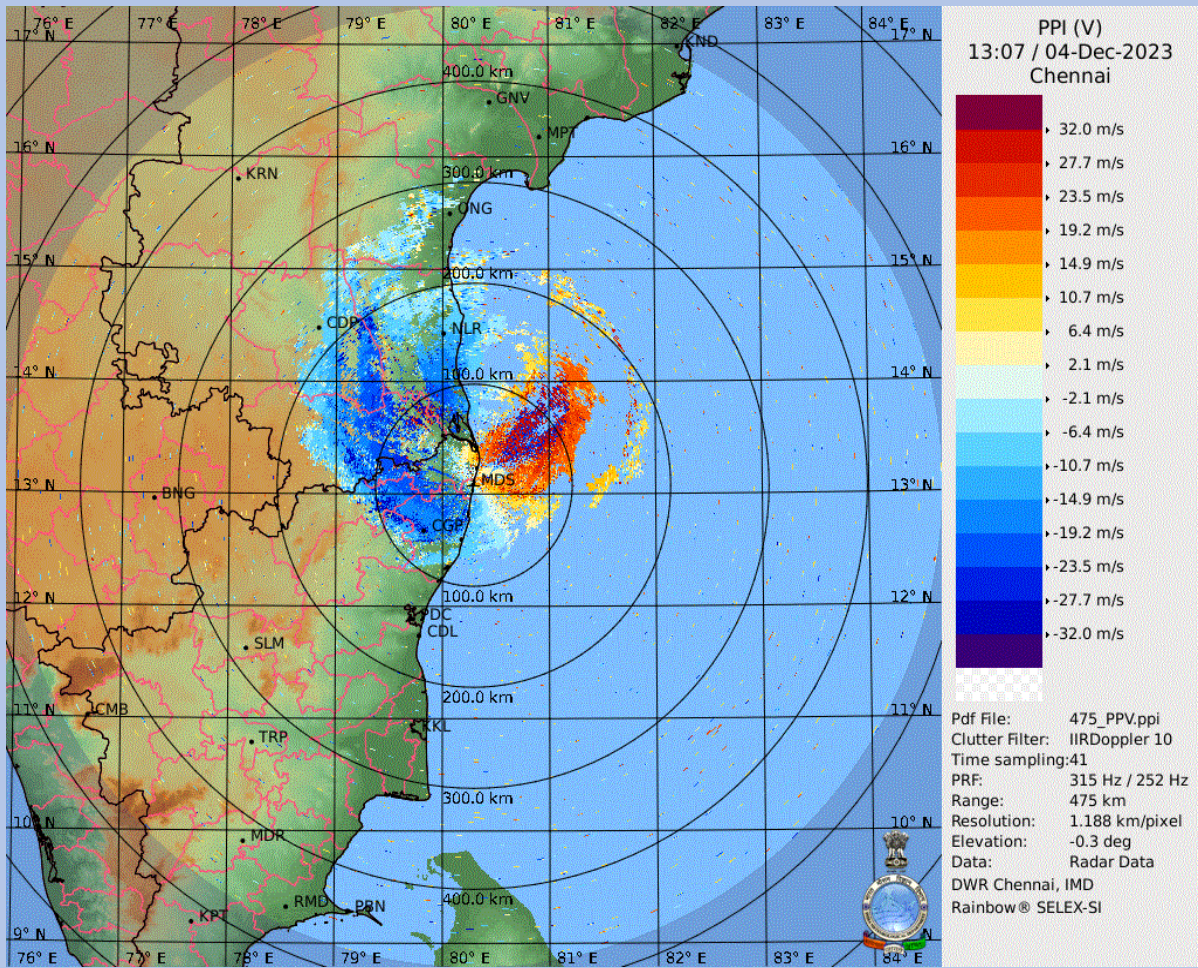
DWR CHENNAI CYCLONE BULLETIN

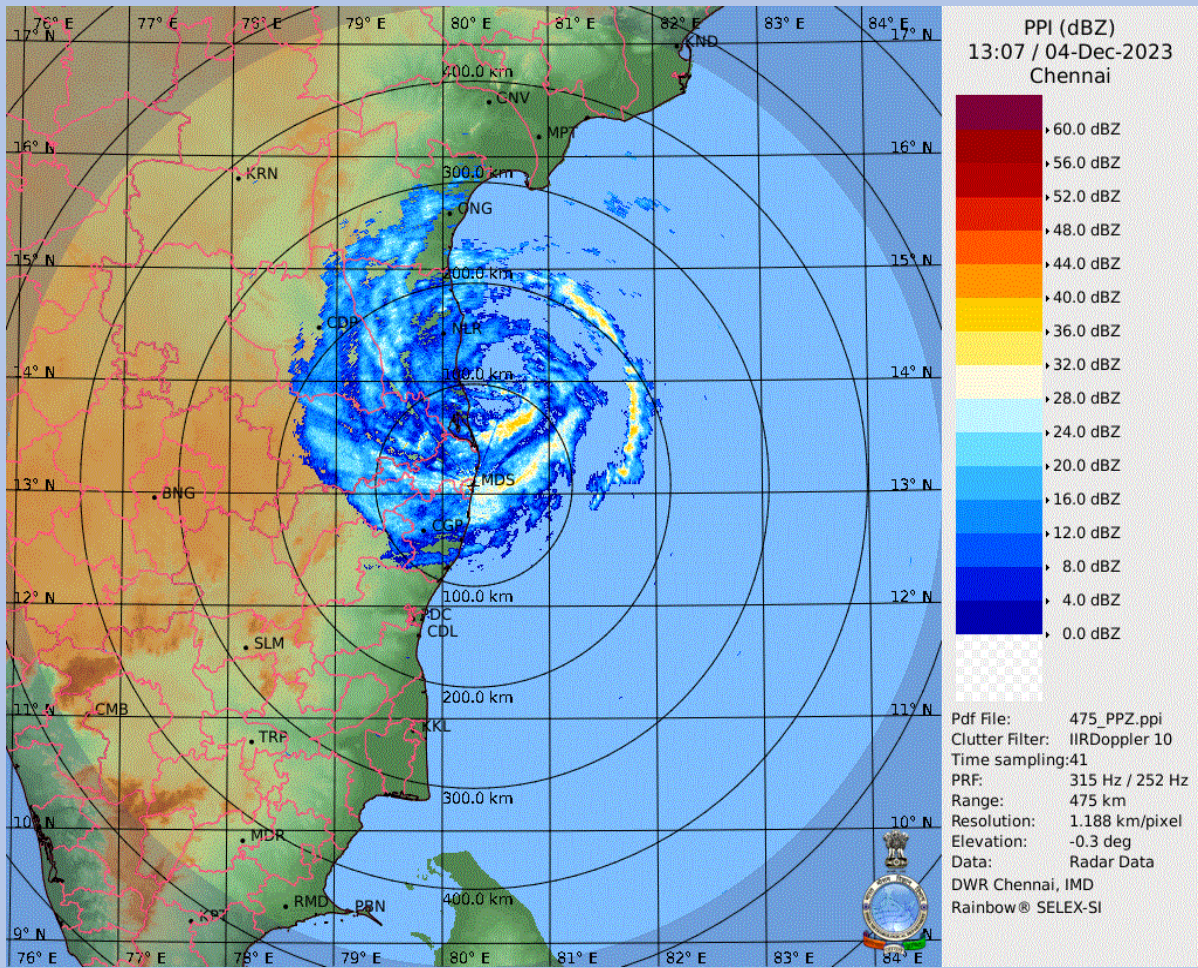
BULLETIN NO: 25

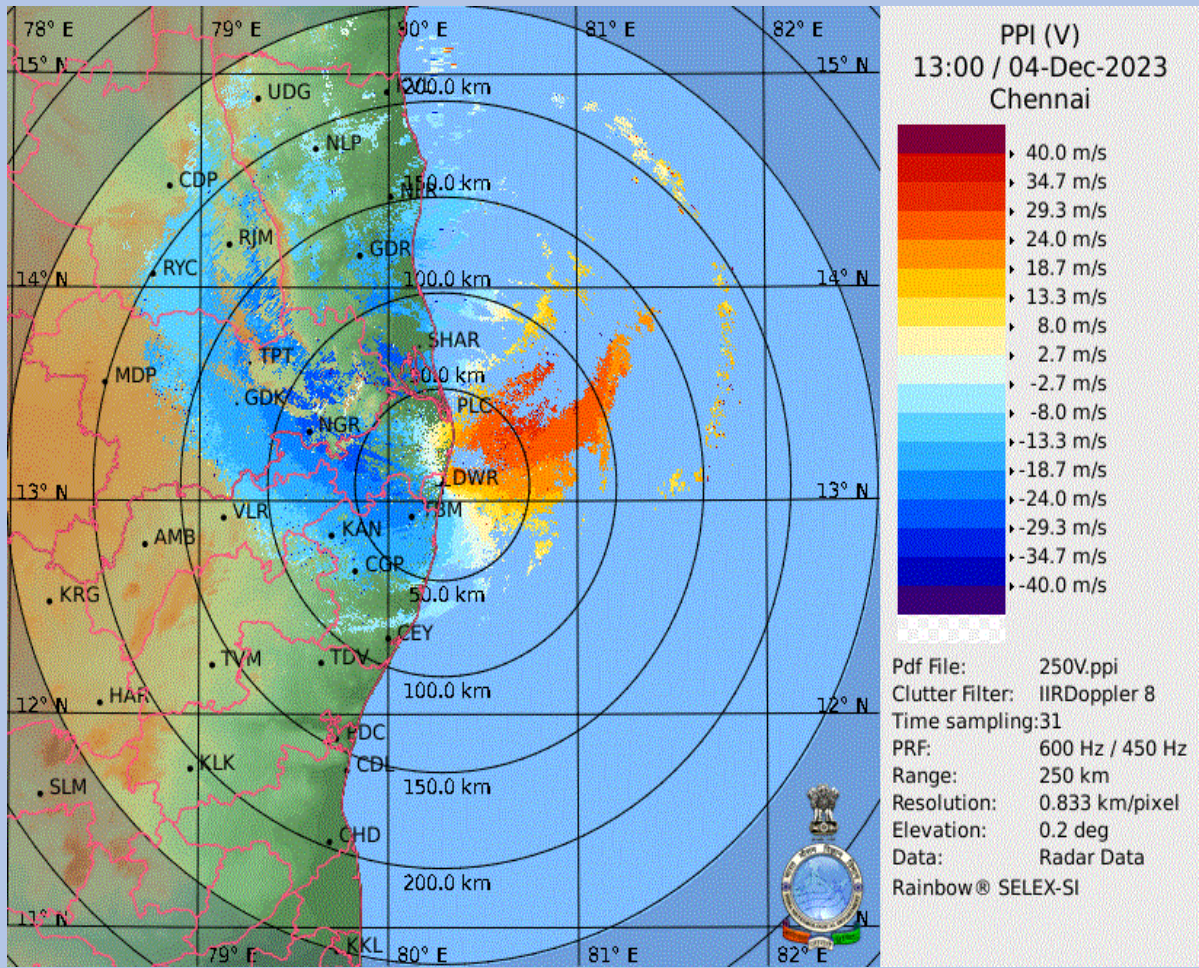
CYCLONE:Michaung TIME: 18:30 IST

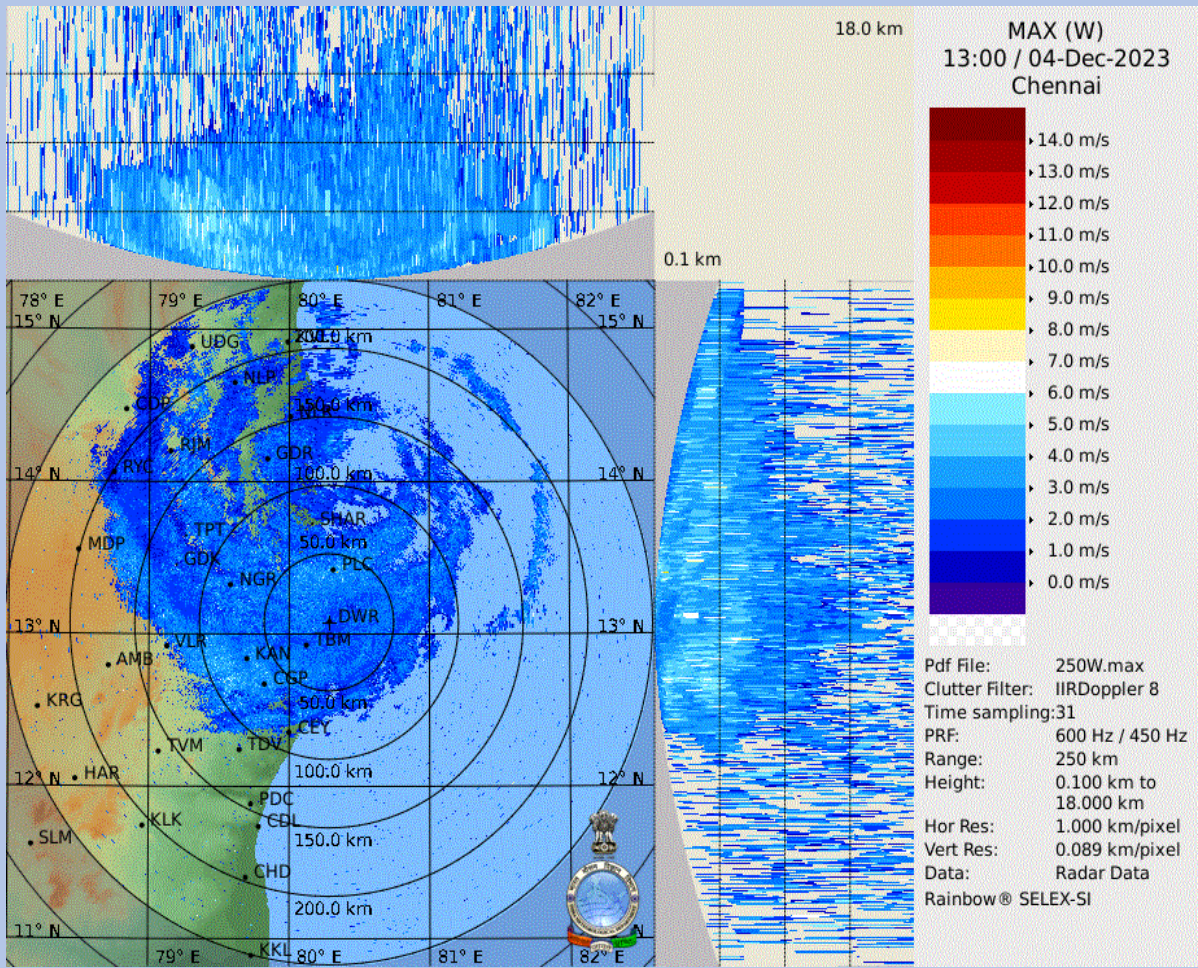
1.	Name of the station	DWR CHENNAI
2.	Date and Time of Observation (UTC)	20231204 / 13:00 UTC
3.	Name of the Cyclone	Michaung
4.	(A) Information about the eye of the Cyclone	
	a) Is the Eye Visible	Yes
	b) Shape of the Eye	Elliptical closed
	c) Diameter of the Eye(km)	45.20km / 38.09km
	d) Estimation of centre of the cyclone based on Eye/spiral band observation	14.0610⁰N,80.3603⁰E
	(B) Other features of the cyclone	
	e) Echo top (height 20 dBZ level) of rain bearing clouds around the cyclone within 100 Km radius (km)	5.92km
	f) Maximum radar reflectivity (dBZ) in the eye wall/spiral band region,its height (km) and position (azimuth and distance from the radar)	23.50 dBZ 3.00 km (6.10deg, 95.20km)
	g) Maximum reflectivity at any other area (spiral/streamers etc)	33.00dBZ 4.00km (269.40deg, 102.70km)
	h) Maximum radial velocity in eye wall/spiral band region (mps), its height (km) and its position (azimuth and distance from the Radar)	32.50m/s 0.50km (53.70deg, 62.00km)
	i) Maximum velocity in any other area (spiral /streamers / rain shields etc)	27.33m/s 1.0km (292.60deg, 54.80km)
5.	Tendency of the Cyclone	
	1) Intensity(Increasing/Decreasing)	No Change
	2) Duration for which the information on movement pertains to	6 hr
	3) Direction of Movement	W
	4) Estimated speed of Movement	17.15 kmph
6.	Any other Significant Feature	Probably heading for a land fall in the next few hours south of Nellore [Zero Isodop parallel to coast and Spectrum width is higher]
7.	Confidence	FAIR

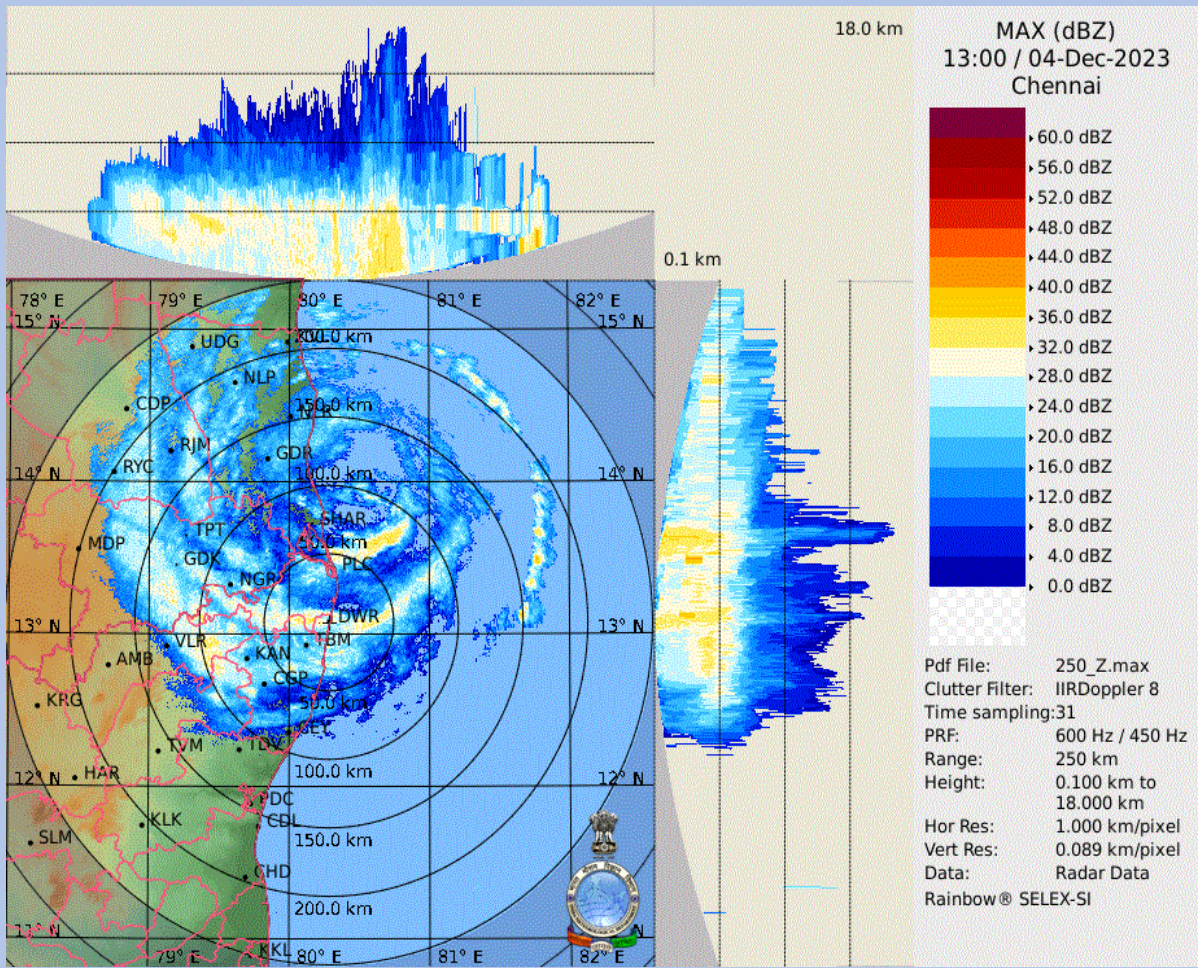
**OFFICER INCHARGE
DWR Chennai**





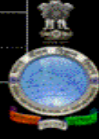
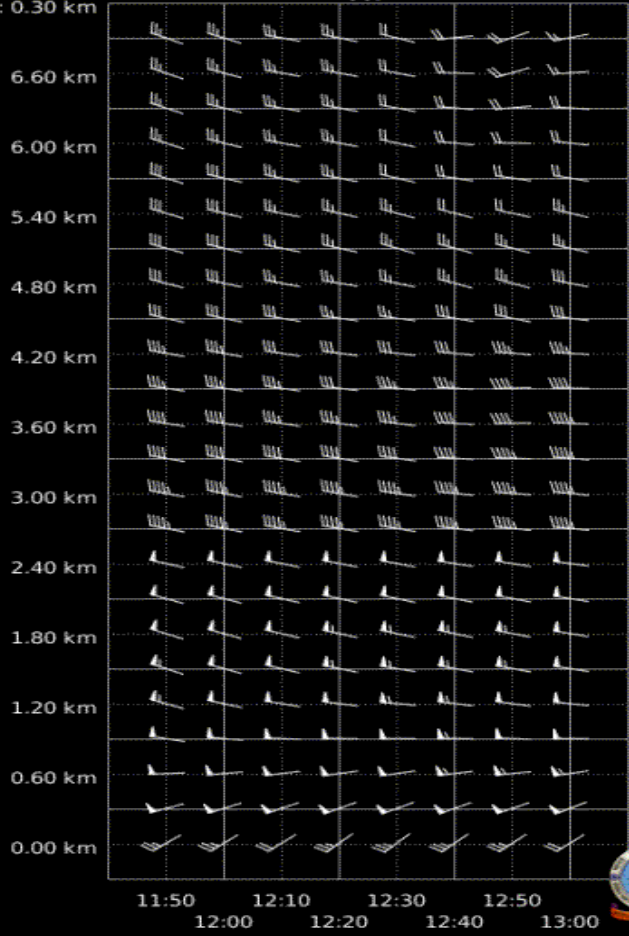






Step: 0.30 km

VVP



VVP (V)
13:00 / 04-Dec-2023
Chennai

Pdf File: 30.vvp
Range: 0 km to 30 km
Clutter Filter: IIRDoppler 8
Time sampling:31
PRF: 600 Hz / 450 Hz
Alg type: Complete
Elevation: 0.2 deg to 21.0 deg
Second reg: On

DWR Chennai, IMD
Rainbow® SELEX-SI