

DWR PARADEEP

Cyclone bulletin No.22

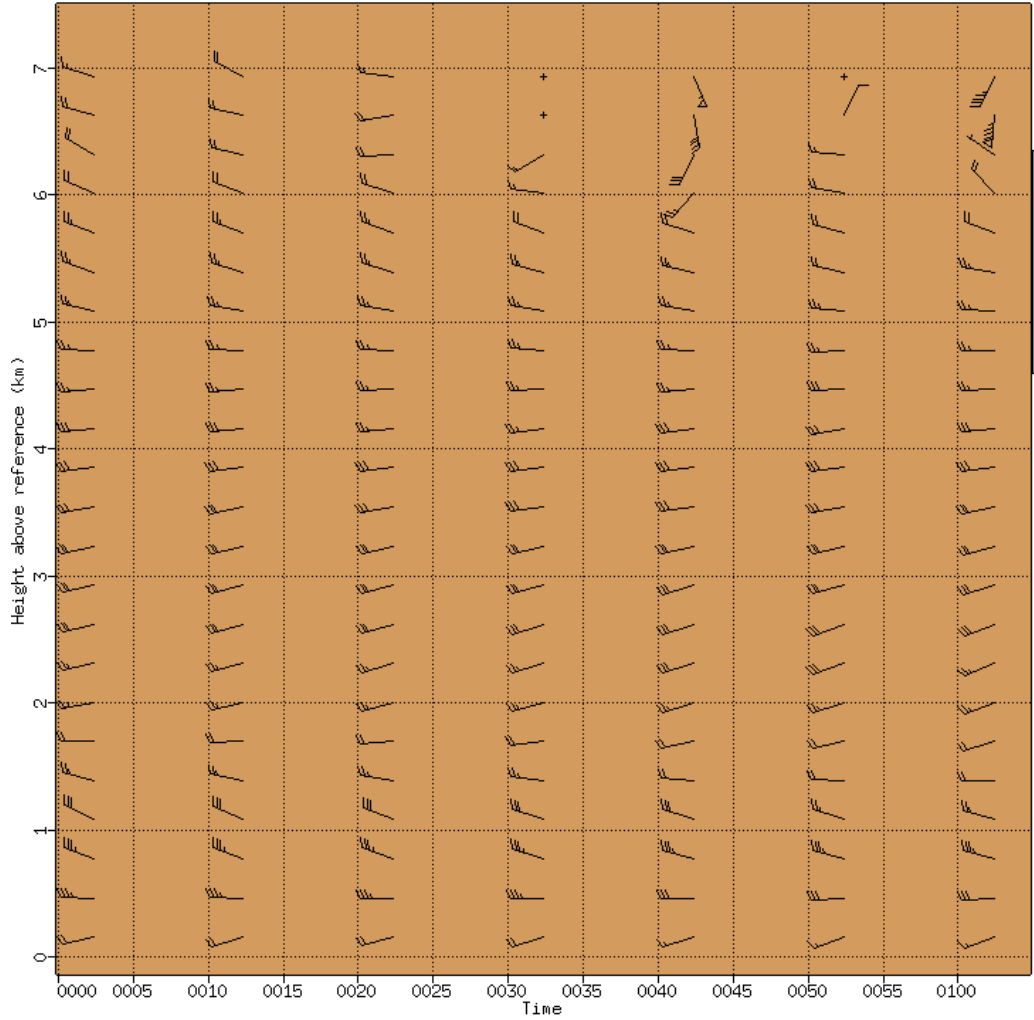
Cyclone : DANA

Time: 25/10/2024 06:30 IST

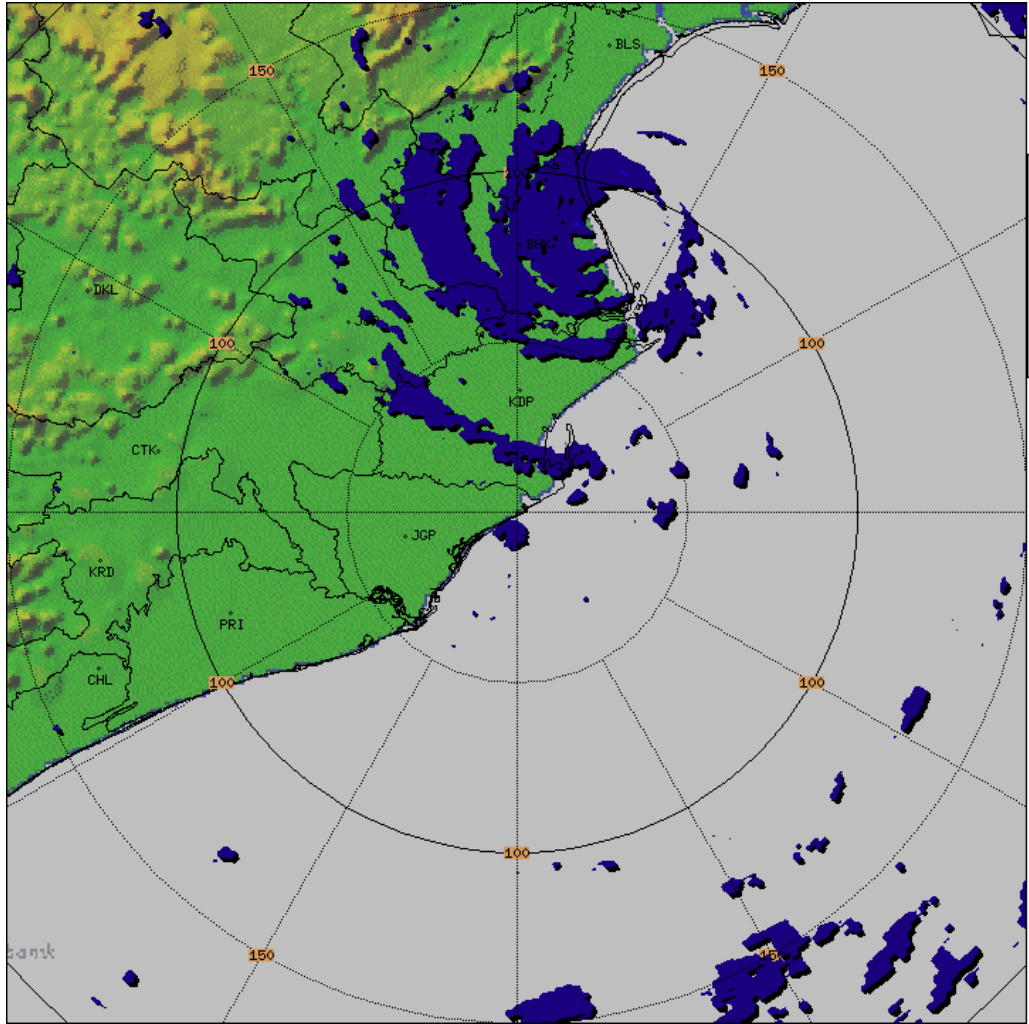
1.	Name of the Station	DWR PARADEEP
2.	Date & Time of observation (UTC)	25/10/2024 0100 UTC
3.	Name of Cyclone	DANA
4.	Information about the Eye of the cyclone	
	a)Is the Eye Visible	Parially visible
	b)Shape of the Eye	Disorted circular
	c)Diameter of the Eye (km)	14km (approx)
	d)Estimation of centre of the cyclone based on Eye/Spiral band observation	21.06 N/86.82E/11.2deg/90.8km
	e)Echo top (20 dBZ level) of rain bearing clouds around the System within 100 km radius	10km
	f) Maximum radar reflectivity (dBZ) in eye wall and Spiral band region, its height (km) and position (azimuth and distance from the radar)	45.5dBZ/9.1km/8.3deg/106.8km
	g) Maximum reflectivity at any other area (spiral/ streamers etc)	34.0dBZ/5.7km/11.4deg/63.7km
	h) Maximum radial velocity in observed (mps), its height (km) and its position (azimuth and distance from the Radar)	-38.79mps/1.4km/8.6deg/92.5km
	i) Maximum velocity in any other area (spiral / streamers / rain shields etc)	-31.5mps/1.3km/2.4deg/92.1km
5.	Tendency of the Cyclone	
	a. Intensity(Increasing/Decreasing)	<u>Sustaining</u>
	b. Duration for which the information on movement pertains to	One hour
	c. Direction of Movement	NW
	d. Estimated speed of Movement	7 kmph(approx)
6.	Any other Significant Feature	N/A
7.	Confidence	GOOD

Dhaneesh K (Sc.D)

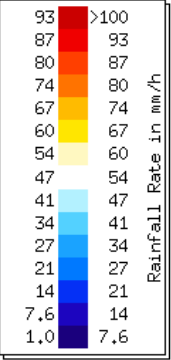
OFFICER-IN-CHARGE
DWR Paradeep

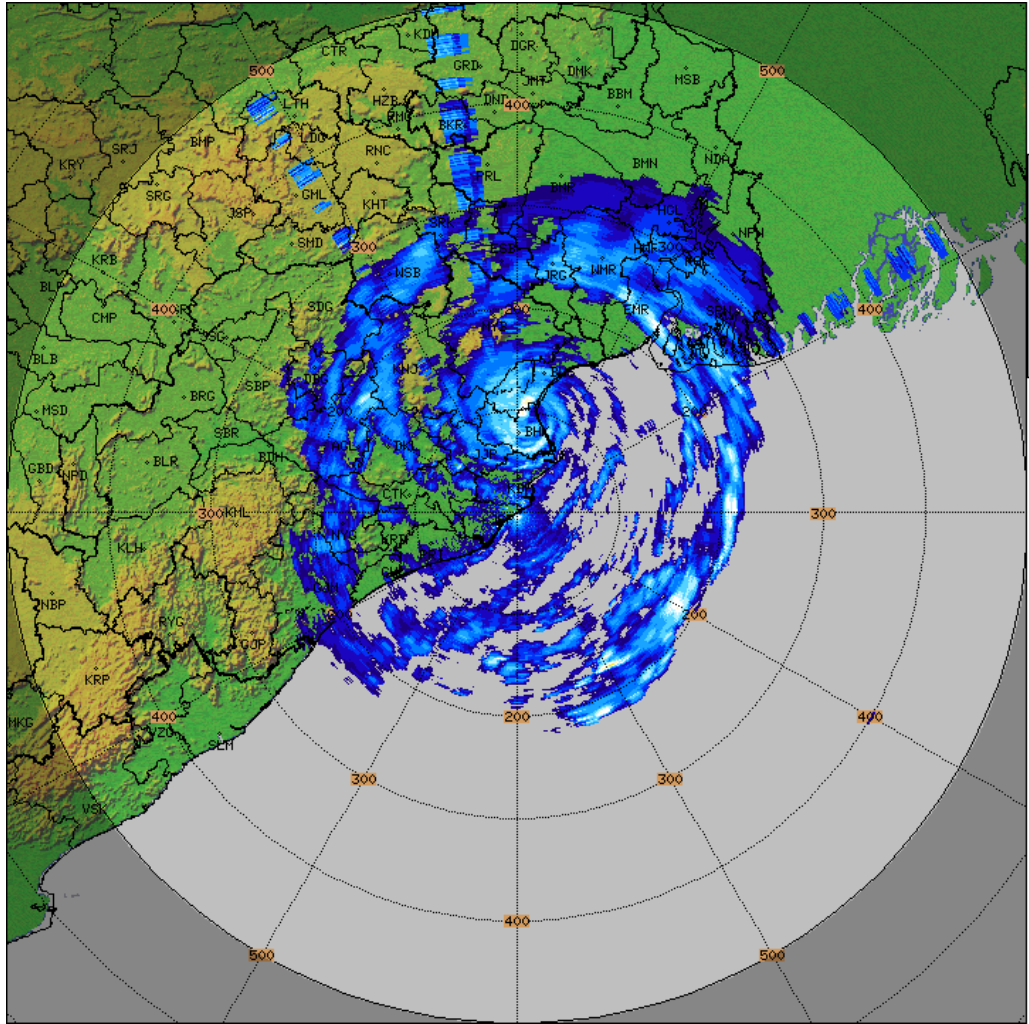


PARADEEP-RADAR
Vol. Vel. Proc.
VVP_30KM
Task: IMD-B
#Intervals:26
Heights:0-8 km
Max Range:30 km
01:02:23Z
25 OCT 2024 UTC

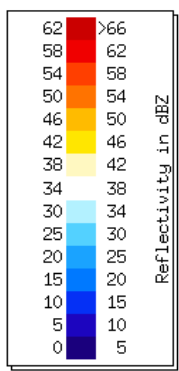


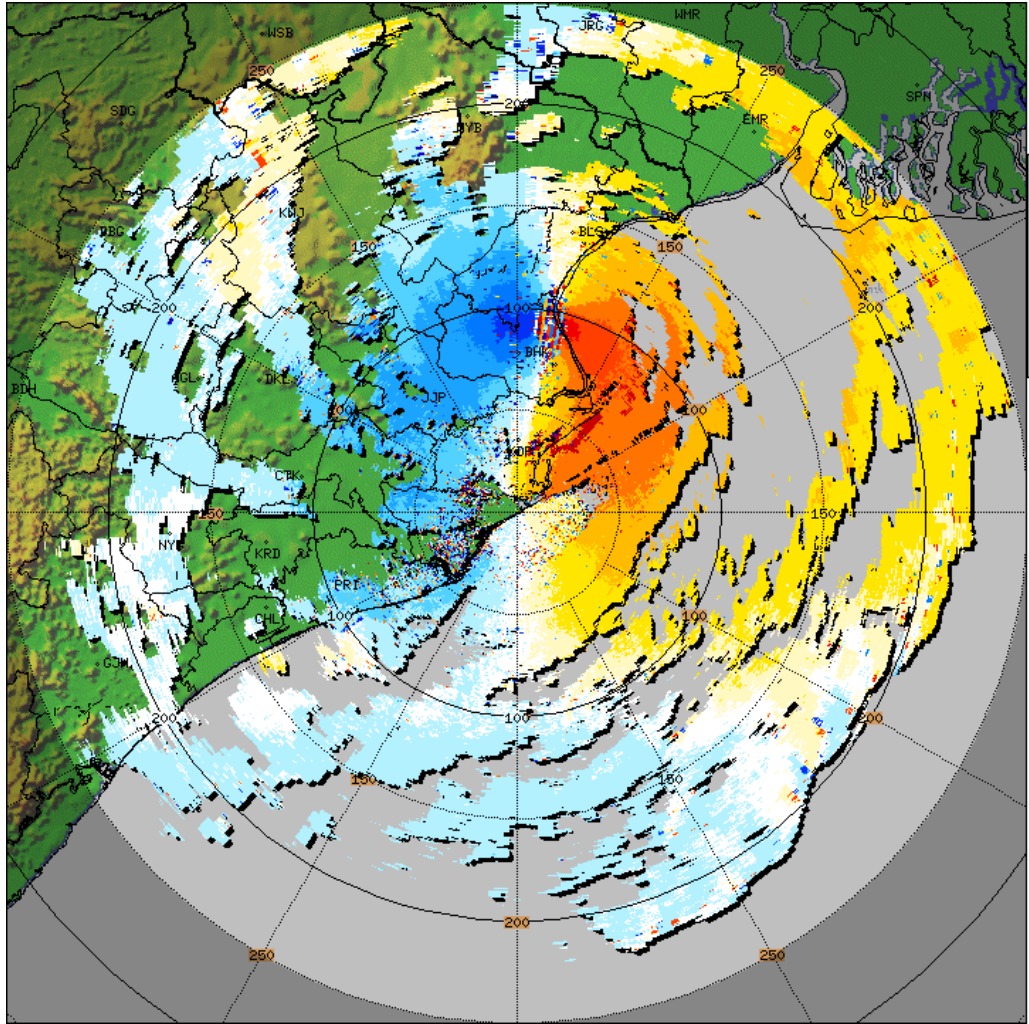
PARADEEP-RADAR
 Surface Rainfall
 SRI_150
 Task: IMD-B
 PRF:600/450
 Melt:Unknown
 Max Range:150 km
23:52:18Z
24 OCT 2024 UTC



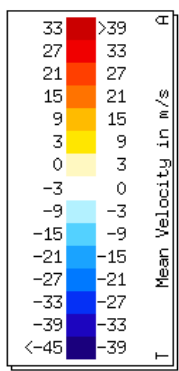


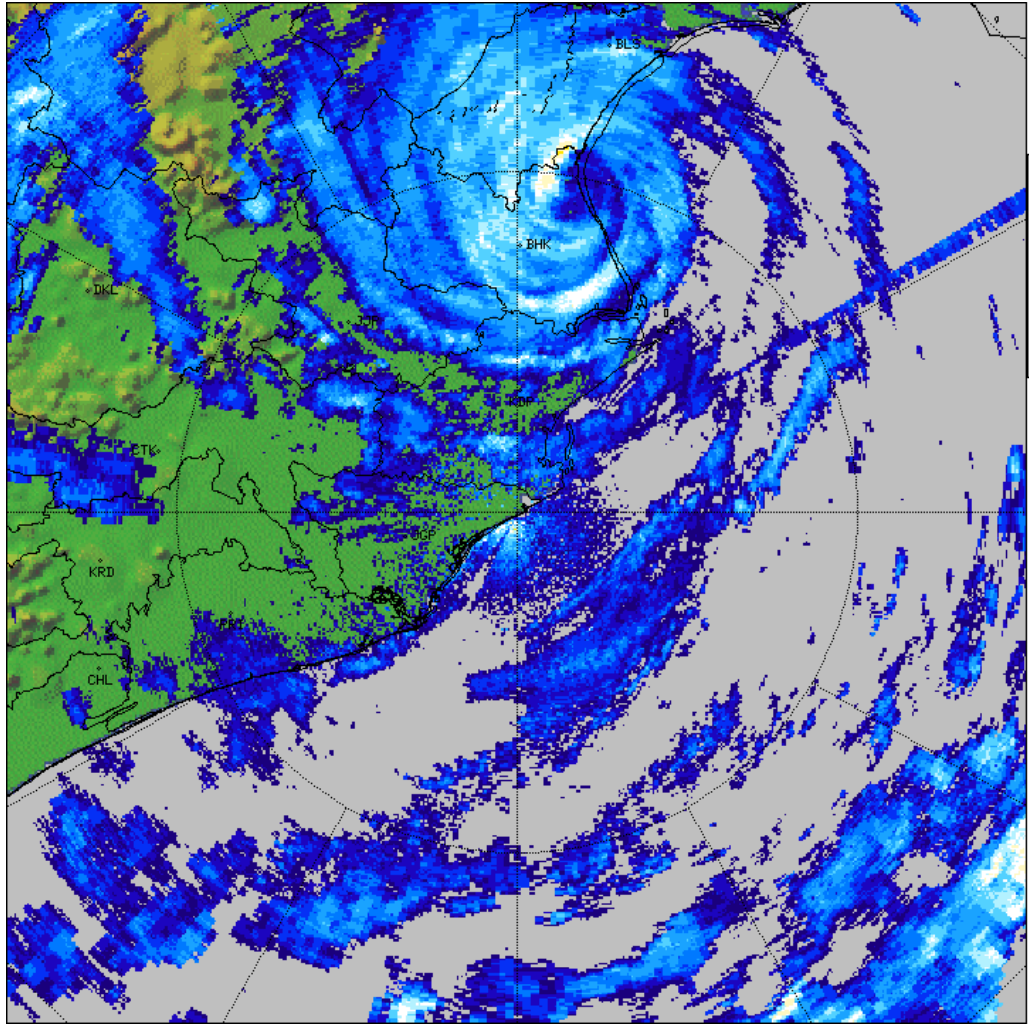
PARADEEP-RADAR
 PPI
 PPI_Z
 Task: IMD-C
 PRF: 250Hz
 Elevation:0.5
 Max Range:500 km
01:10:24Z
25 OCT 2024 UTC



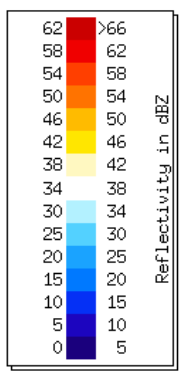


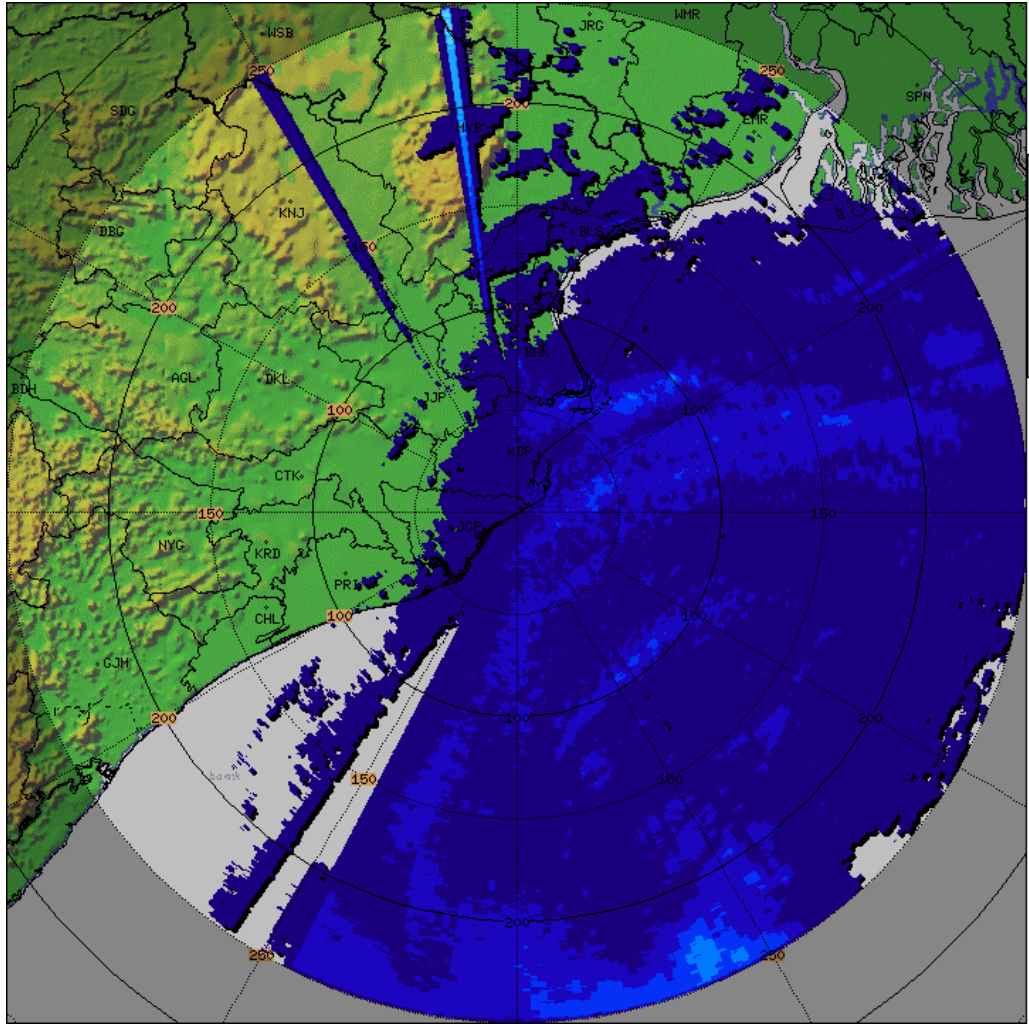
PARADEEP-RADAR
 PPI
 PPI_V
 Task: IMD-B
 PRF:600/450
 Elevation:0.5
 Max Range:250 km
01:02:23Z
25 OCT 2024 UTC





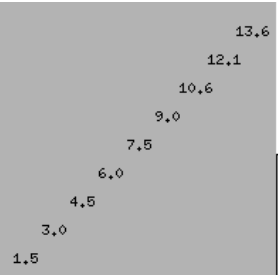
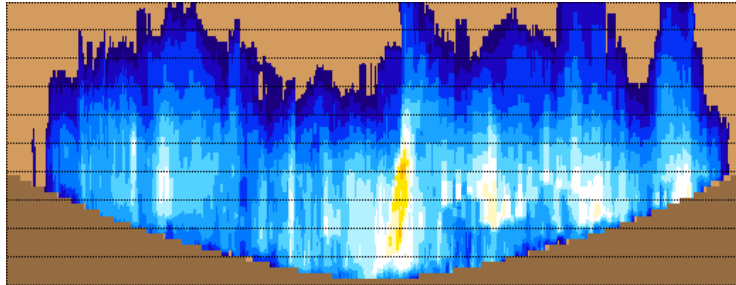
PARADEEP-RADAR
PPI
PPI_150KM
Task: IMD-B
PRF:600/450
Elevation:0.5
Max Range:150 km
01:02:23Z
25 OCT 2024 UTC





PARADEEP-RADAR
 N Hours Rainfall
 HOUR_24
 Task: IMD-B
 PRF:600/450
 Hours:21/24
 Max Range:250 km
03:00:00Z
24 OCT 2024 UTC

Rain Accum. in mm
93
87
80
74
67
60
54
47
41
34
27
21
14
7,6
1,0



PARADEEP-RADAR
 Max with panels
 MAX_Z
 Task: IMD-B
 Min Hgt:0.0 km
 Max Hgt:15.0 km
 Max Range:250 km
01:02:23Z
 25 OCT 2024 UTC

