

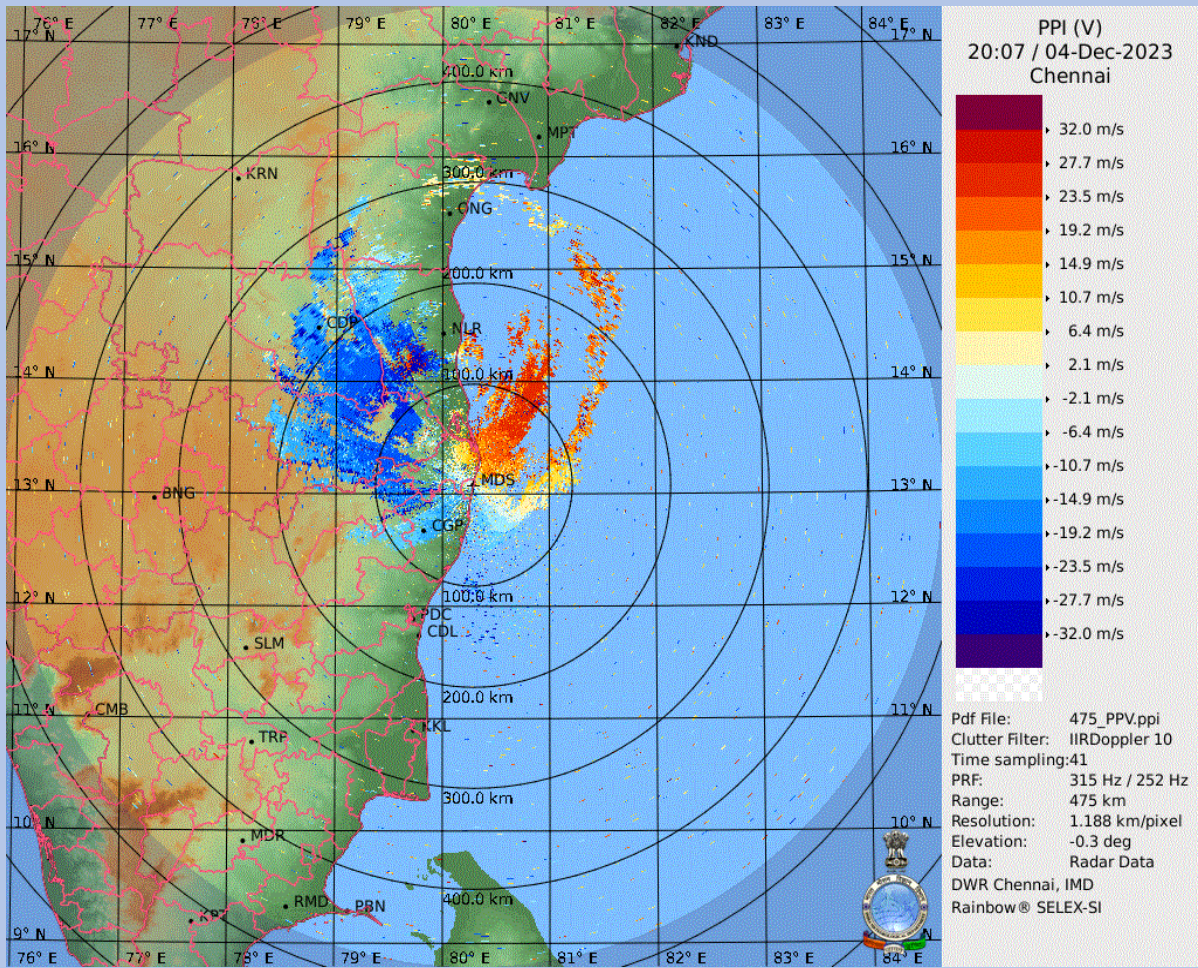
# DWR CHENNAI CYCLONE BULLETIN

**BULLETIN NO: 28**

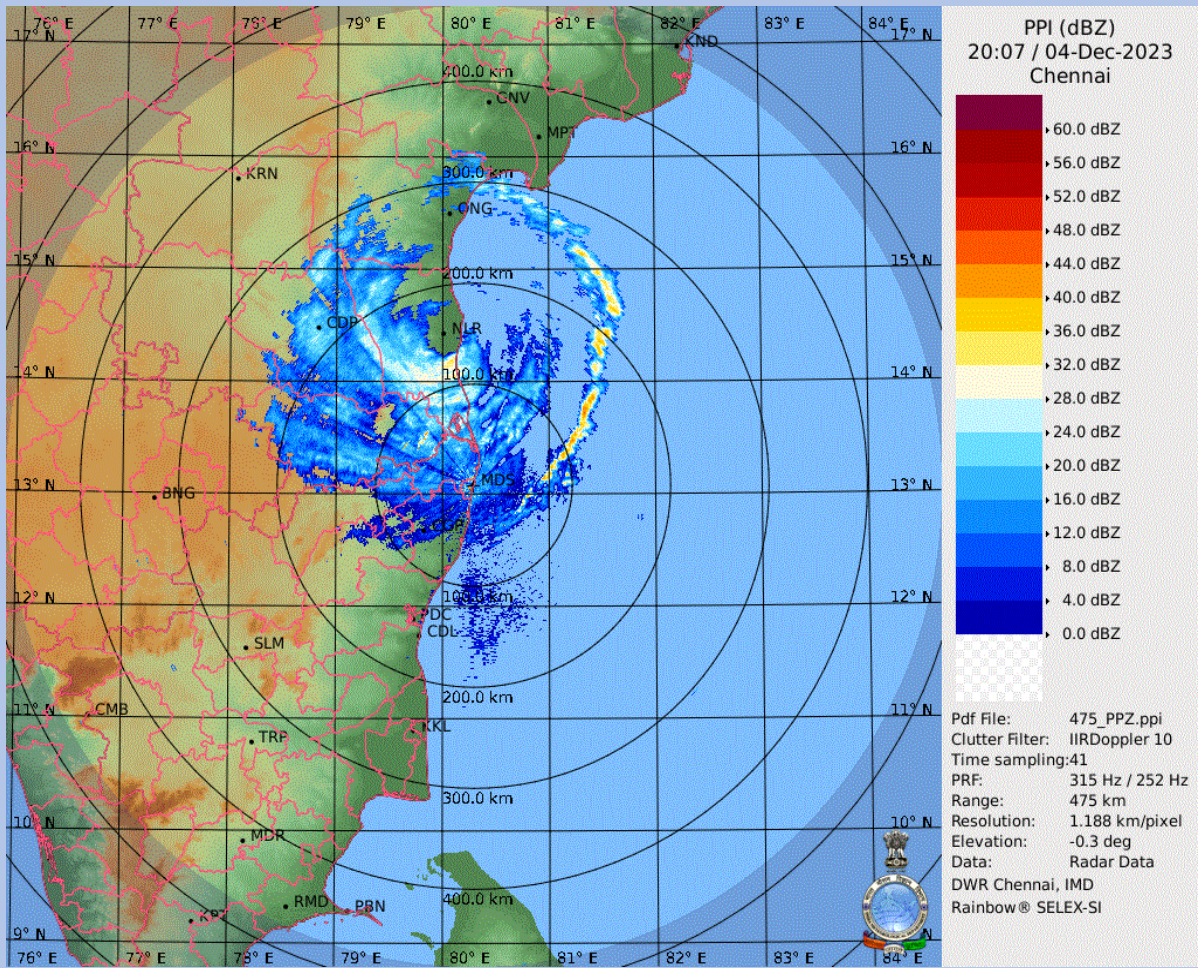
**CYCLONE:Michaung TIME: 01:30 IST**

1.	Name of the station	<b>DWR CHENNAI</b>
2.	Date and Time of Observation (UTC)	<b>20231204 / 20:00 UTC</b>
3.	Name of the Cyclone	<b>Michaung</b>
4.	(A) Information about the eye of the Cyclone	
	a) Is the Eye Visible	<b>Yes</b>
	b) Shape of the Eye	<b>Circular open</b>
	c) Diameter of the Eye(km)	<b>35.00km / nankm</b>
	d) Estimation of centre of the cyclone based on Eye/spiral band observation	<b>14.4810<sup>0</sup>N,80.0900<sup>0</sup>E</b>
	(B) Other features of the cyclone	
	e) Echo top (height 20 dBZ level) of rain bearing clouds around the cyclone within 100 Km radius (km)	<b>10.12km</b>
	f) Maximum radar reflectivity (dBZ) in the eye wall/spiral band region,its height (km) and position (azimuth and distance from the radar)	<b>32.50 dBZ 0.29 km (339.90deg, 122.30km)</b>
	g) Maximum reflectivity at any other area (spiral/streamers etc)	<b>35.50dBZ 0.12km (69.60deg, 100.40km)</b>
	h) Maximum radial velocity in eye wall/spiral band region (mps), its height (km) and its position (azimuth and distance from the Radar)	<b>27.38m/s 2.20km (17.30deg, 116.60km)</b>
	i) Maximum velocity in any other area (spiral /streamers / rain shields etc)	<b>21.44m/s 2.24km (314.60deg, 242.10km)</b>
5.	Tendency of the Cyclone	
	1) Intensity(Increasing/Decreasing)	<b>No Change</b>
	2) Duration for which the information on movement pertains to	<b>10 hr</b>
	3) Direction of Movement	<b>WSW</b>
	4) Estimated speed of Movement	<b>12.83 kmph</b>
6.	Any other Significant Feature	<b>Large spiral band extending</b>
7.	Confidence	<b>GOOD</b>

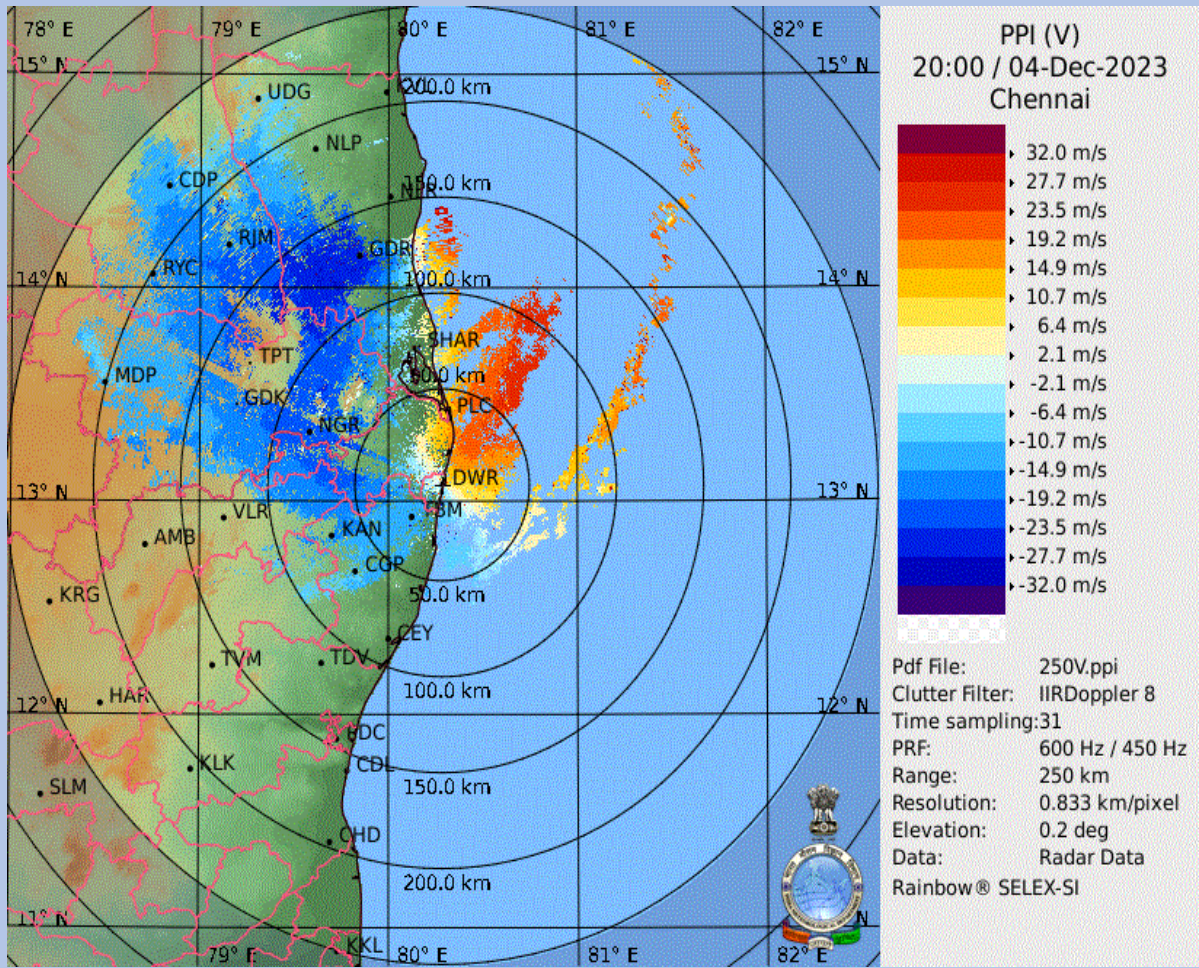
**OFFICER INCHARGE  
DWR Chennai**



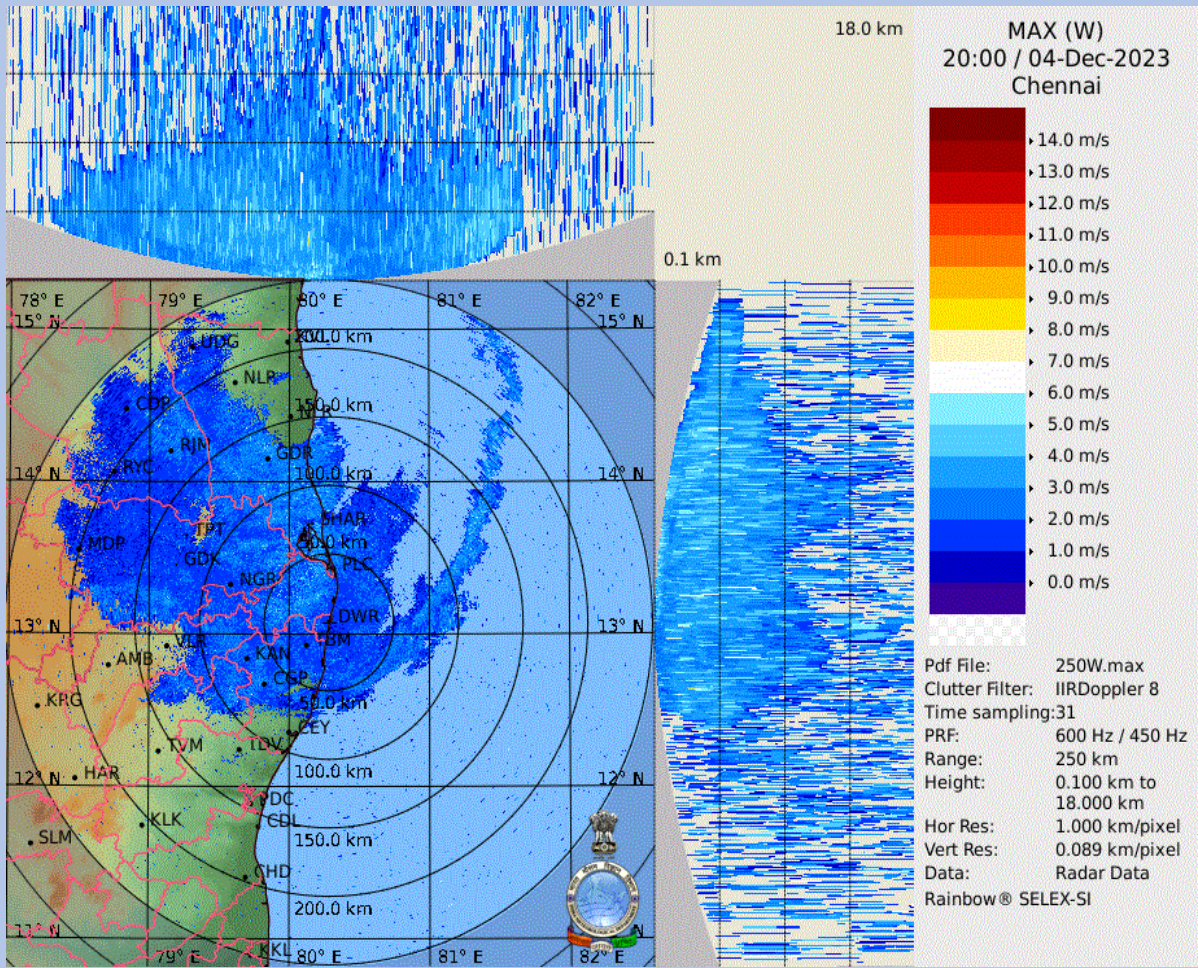




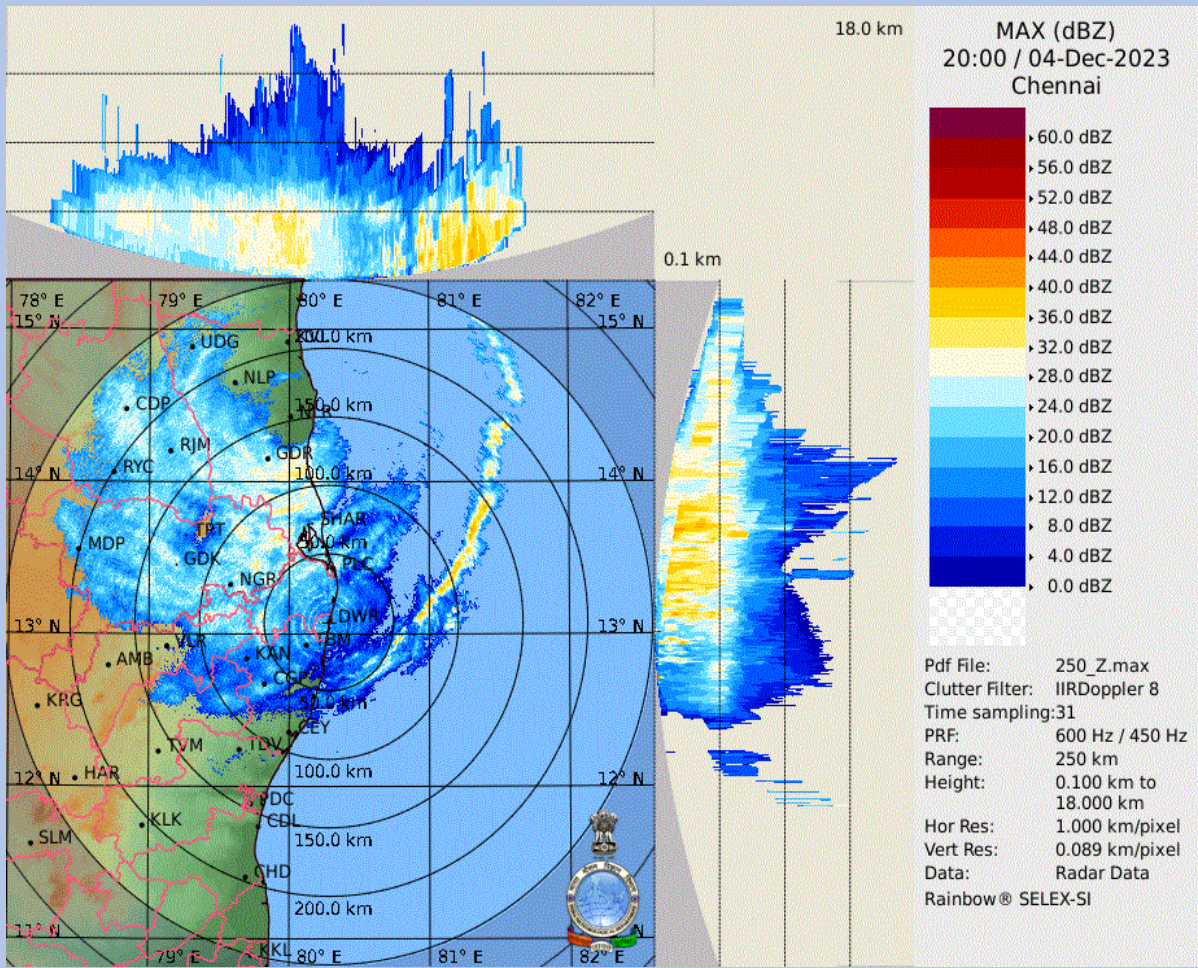


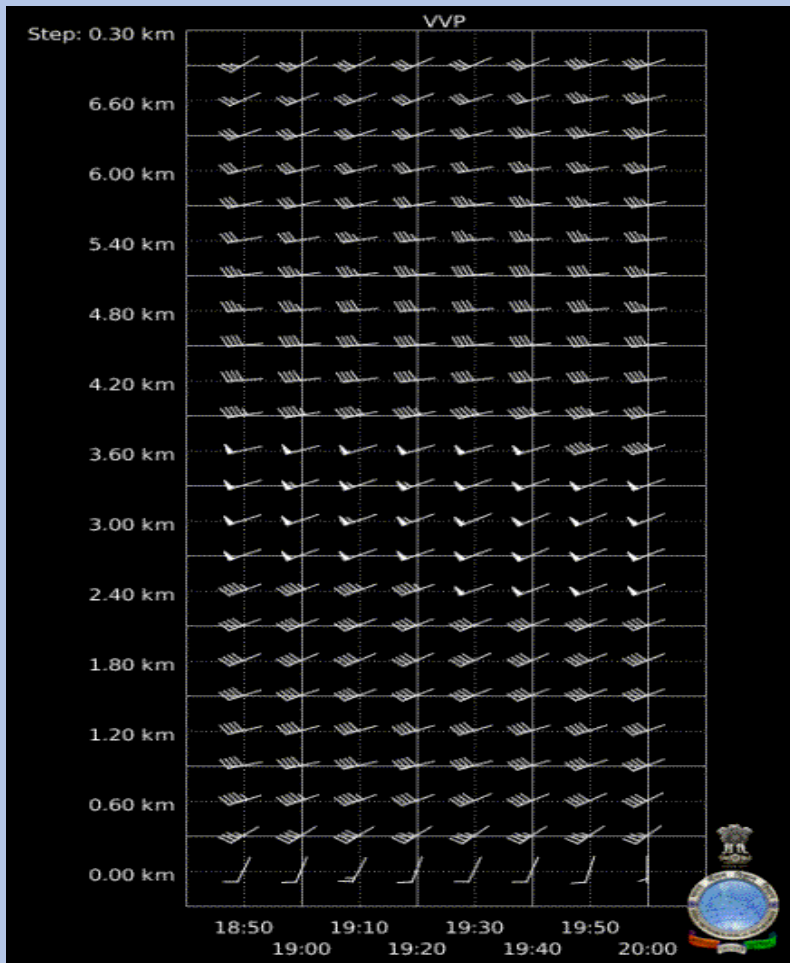












VVP (V)  
 20:00 / 04-Dec-2023  
 Chennai

Pdf File: 30.vvp  
 Range: 0 km to 30 km  
 Clutter Filter: IIRDoppler 8  
 Time sampling: 31  
 PRF: 600 Hz / 450 Hz  
 Alg type: Complete  
 Elevation: 0.2 deg to 21.0 deg  
 Second reg: On

DWR Chennai, IMD  
 Rainbow® SELEX-SI