

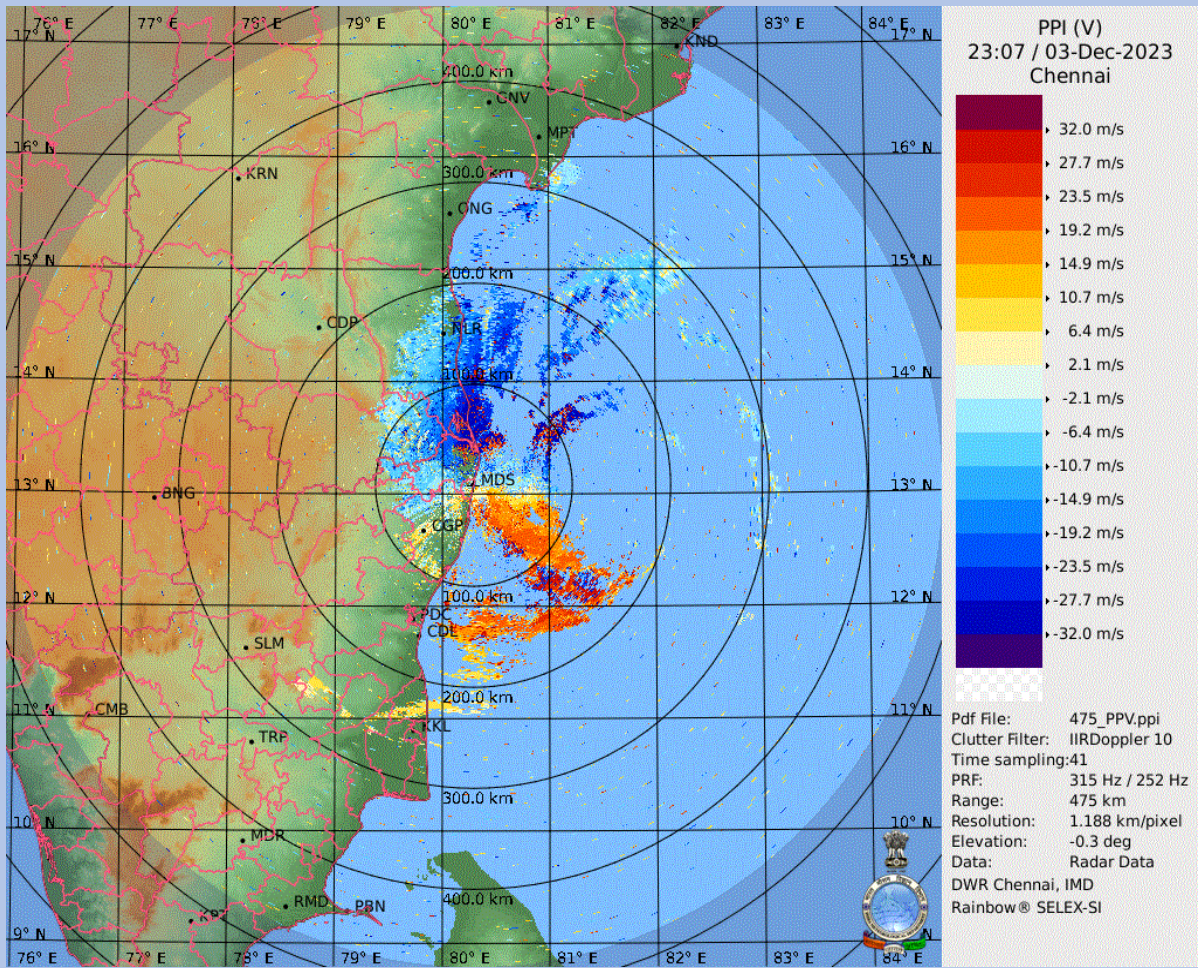
# DWR CHENNAI CYCLONE BULLETIN

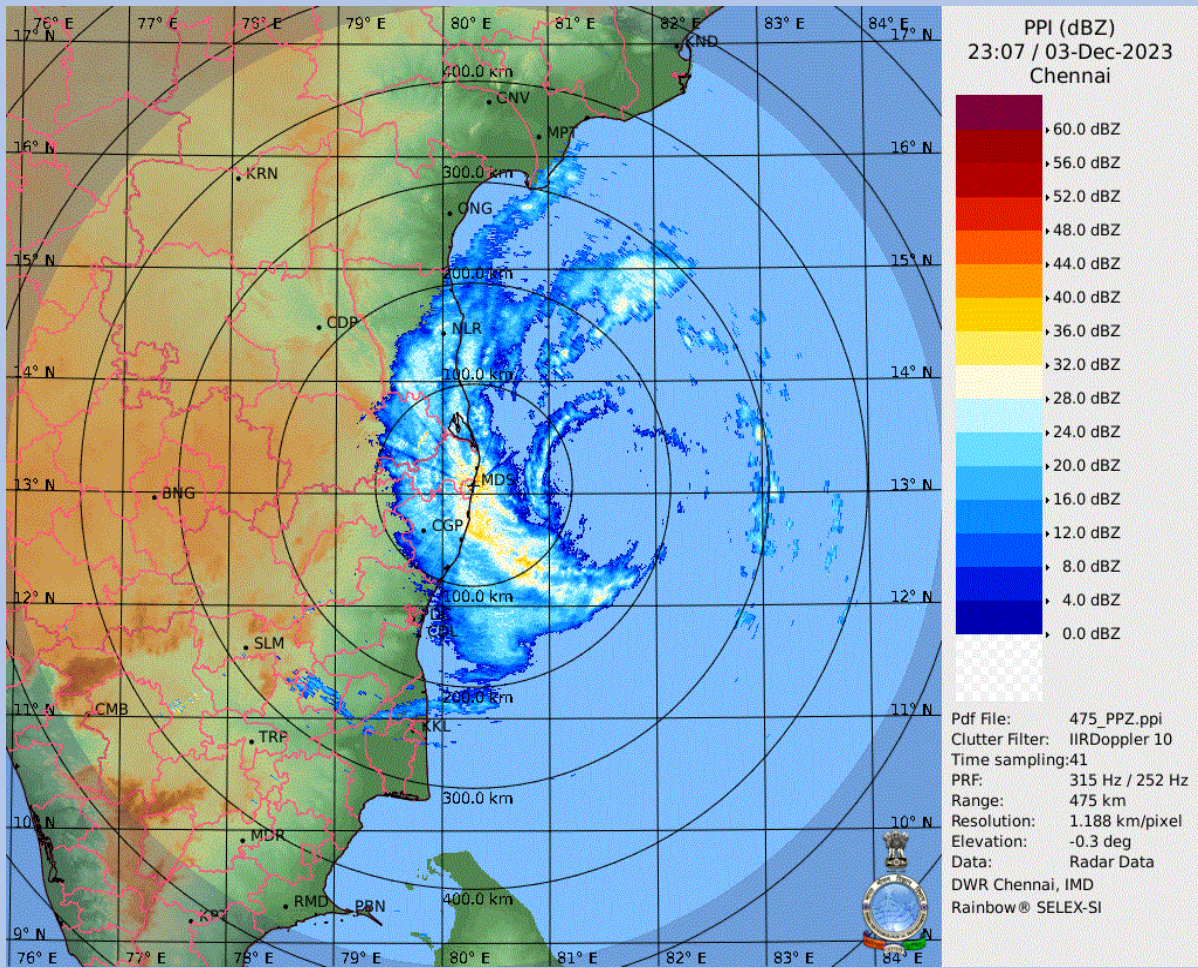
**BULLETIN NO: 11**

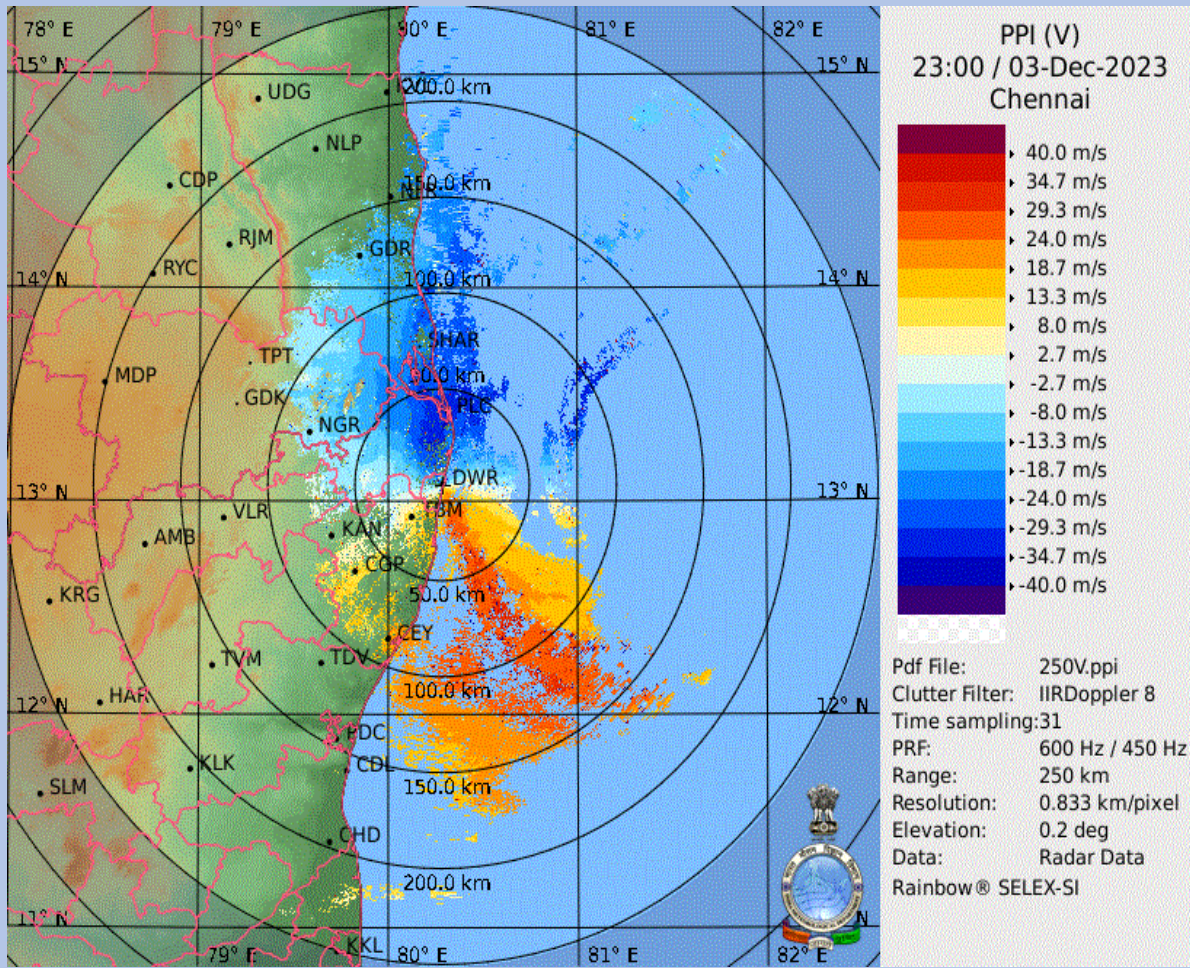
**CYCLONE:Michaung TIME: 04:30 IST**

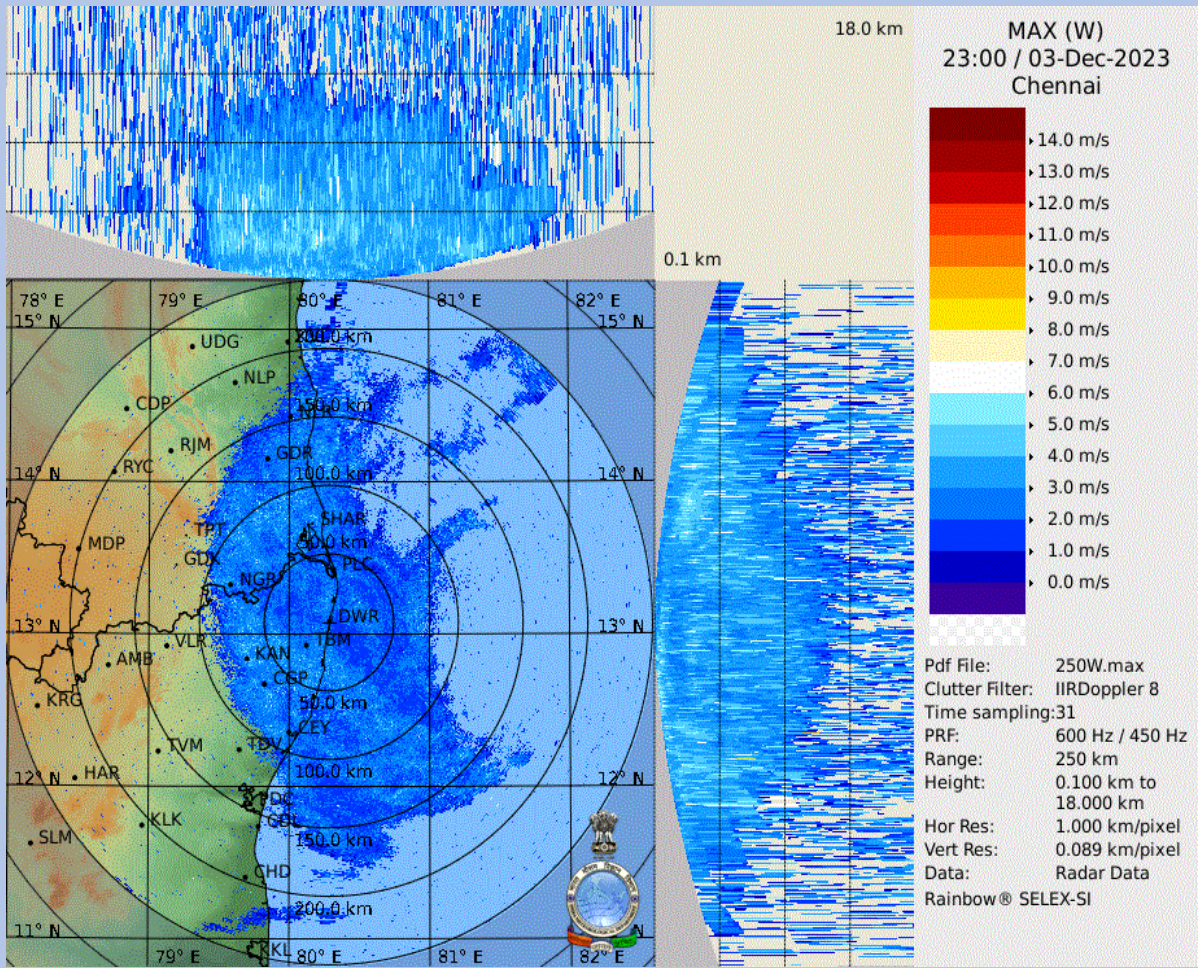
1.	Name of the station	<b>DWR CHENNAI</b>
2.	Date and Time of Observation (UTC)	<b>20231203 / 23:00 UTC</b>
3.	Name of the Cyclone	<b>Michaung</b>
4.	(A) Information about the eye of the Cyclone	
	a) Is the Eye Visible	<b>Yes</b>
	b) Shape of the Eye	<b>Elongated partial</b>
	c) Diameter of the Eye(km)	<b>124.00km / 102.20km</b>
	d) Estimation of centre of the cyclone based on Eye/spiral band observation	<b>13.0413<sup>0</sup>N,81.3193<sup>0</sup>E</b>
	(B) Other features of the cyclone	
	e) Echo top (height 20 dBZ level) of rain bearing clouds around the cyclone within 100 Km radius (km)	<b>6.59km</b>
	f) Maximum radar reflectivity (dBZ) in the eye wall/spiral band region,its height (km) and position (azimuth and distance from the radar)	<b>27.00 dBZ 2.80 km (77.70deg, 67.60km)</b>
	g) Maximum reflectivity at any other area (spiral/streamers etc)	<b>37.00dBZ 4.80km (234.50deg, 51.80km)</b>
	h) Maximum radial velocity in eye wall/spiral band region (mps), its height (km) and its position (azimuth and distance from the Radar)	<b>40.99m/s 0.70km (71.80deg, 77.10km)</b>
	i) Maximum velocity in any other area (spiral /streamers / rain shields etc)	<b>43.95m/s 0.70km (153.10deg, 67.80km)</b>
5.	Tendency of the Cyclone	
	1) Intensity(Increasing/Decreasing)	<b>No Change</b>
	2) Duration for which the information on movement pertains to	<b>6 hr</b>
	3) Direction of Movement	<b>E</b>
	4) Estimated speed of Movement	<b>10.03 kmph</b>
6.	Any other Significant Feature	<b>System reorganising</b>
7.	Confidence	<b>GOOD</b>

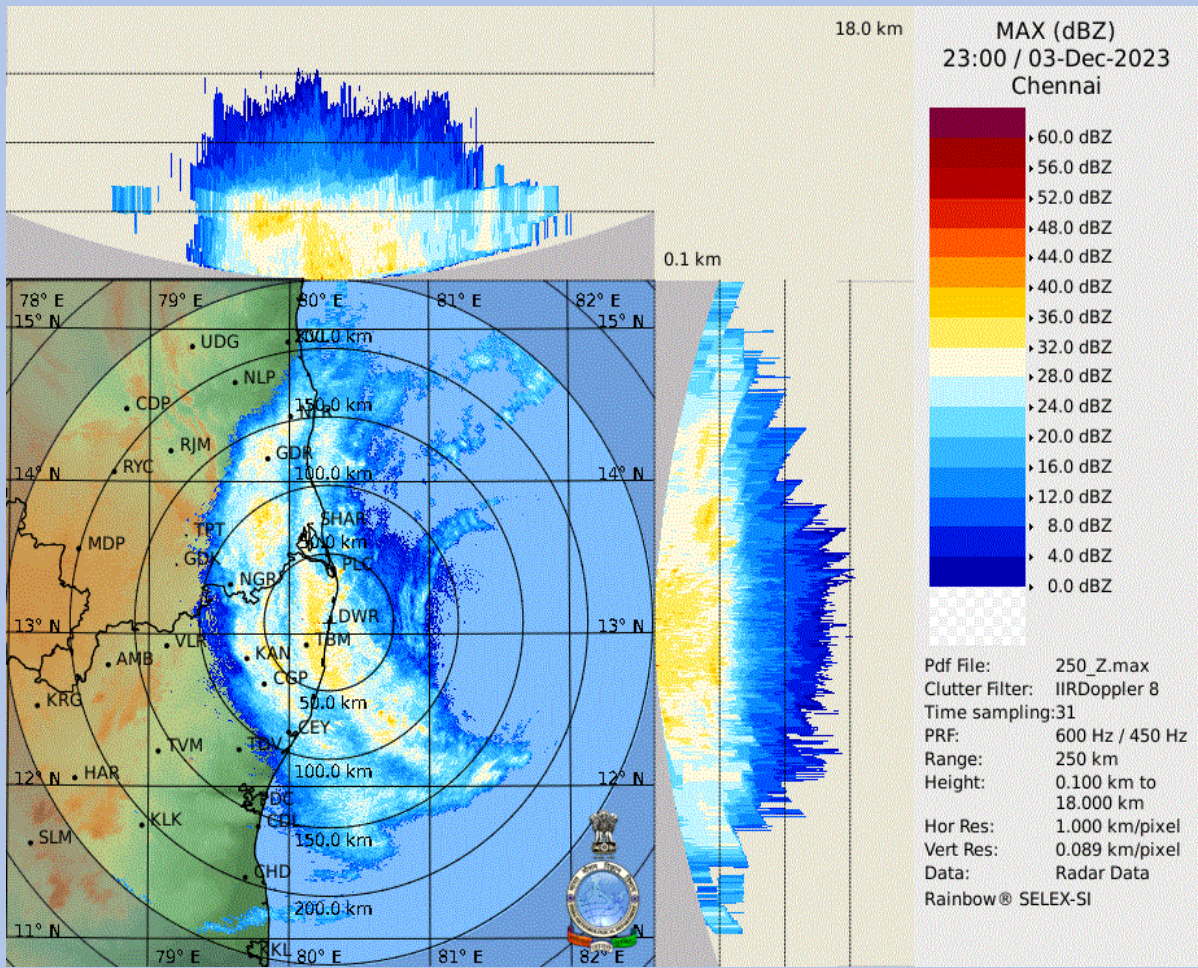
**OFFICER INCHARGE  
DWR Chennai**











Step: 0.30 km

VVP

6.60 km

6.00 km

5.40 km

4.80 km

4.20 km

3.60 km

3.00 km

2.40 km

1.80 km

1.20 km

0.60 km

0.00 km

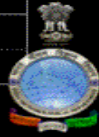
21:50

22:10

22:30

22:50

23:00



DWR Chennai, IMD  
Rainbow® SELEX-SI

VVP (V)

23:00 / 03-Dec-2023

Chennai

Pdf File: 30.vvp  
Range: 0 km to 30 km  
Clutter Filter: IIRDoppler 8  
Time sampling: 31  
PRF: 600 Hz / 450 Hz  
Alg type: Complete  
Elevation: 0.2 deg to 21.0 deg  
Second reg: On